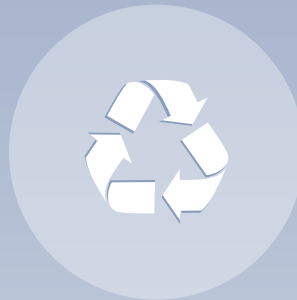


ACT TODAY, THINK ABOUT TOMORROW.



WE ASSUME RESPONSIBILITY
FOR THE WORLD WE LIVE IN

CERTIFIED
ENVIRONMENTAL MANGEMENT

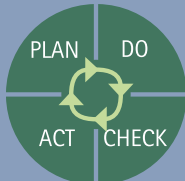


EMAS (the European Eco-Management and Audit Scheme) is regarded as the most most demanding environmental management system in the world.

First EMAS validation
of our operating bases

- 1996 Berlin, Germany
- 1997 Kirchlegern and Frankenberg, Germany
- 2003 Aizarnazabal, Spain
- 2004 Balingen, Germany
- 2013 Žďár nad Sázavou, Czech Republic

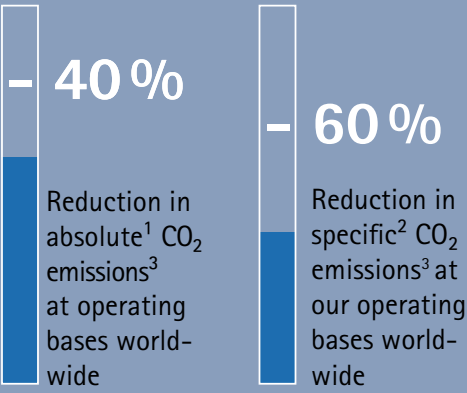
ISO 50001 certifications
(energy management):



- 2015 Spenge, Germany
- 2017 Vlotho, Germany

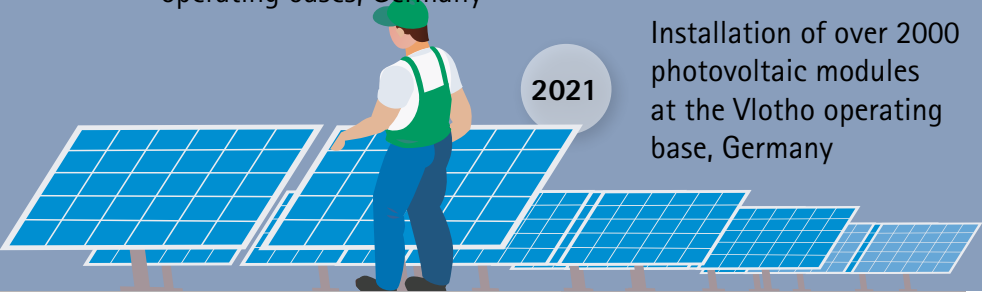
REDUCED
CO₂ EMISSIONS

2016 up to 2021



ENERGY

- 2017 Procurement of 100 % green electricity at the Kirchlegern and Spenge operating bases, Germany
- 2021 Procurement of green electricity at all German operating bases
- 2021 Installation of over 2000 photovoltaic modules at the Vlotho operating base, Germany

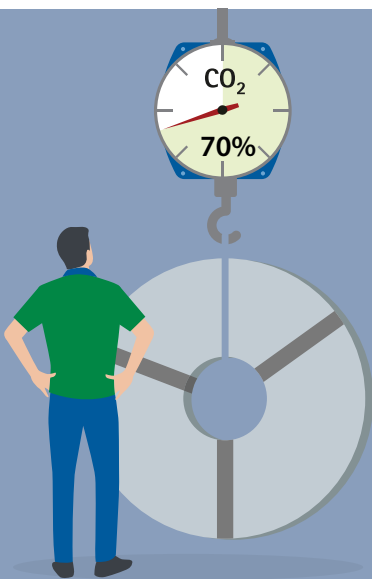


ON THE WAY
TO GREEN STEEL

Successful pilot project with
CO₂ reduced steel

2021

CO₂ reduced steel generates
over 70 % fewer CO₂ emissions
across the entire production
process



LOCAL ACTIVITIES

Planting of flowering meadows
at German operating bases

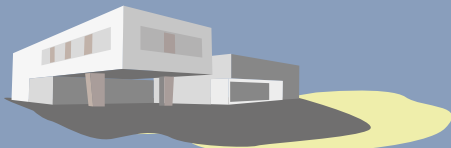
- 2018 Spenge, Germany
- 2021 Kirchlegern und Vlotho/Exter, Germany



"Our aim is to link business success with
environmental and civic responsibility."

Dr. Andreas Hettich, Chair of the Hettich Group's Advisory Board

ENERGY EFFICIENT
ARCHITECTURE



2008

Newly constructed Hettich Forum,
Kirchlegern, Germany

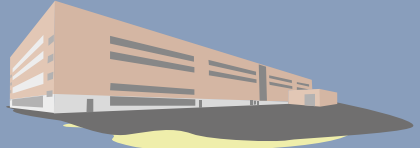


EU Green Building
certified



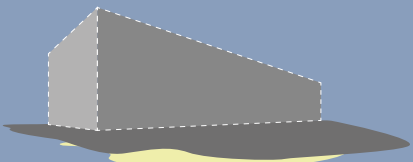
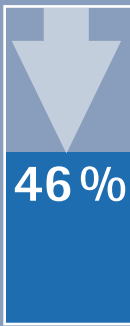
2011

Newly constructed C2
production facility,
Bünde, Germany, falls
below the primary energy
requirement defined
in the German Energy
Saving Regulation (EnEV)
from 2009 by



2017

Newly constructed B7
production facility,
Kirchlegern, Germany,
falls below the primary
energy requirement
defined in the German
Energy Saving Regulation
(EnEV) from 2016 by



2023

Newly constructed C3
production facility,
Kirchlegern, Germany,
falls below the annual
primary energy
requirement defined in the
German Building Energy
Act (GEG) from 2020 by



¹ Sum of all CO₂ equivalents (CO₂e) (Scope 1 and 2, without vehicle fleet)
² g CO₂ equivalent (CO₂e) / kg gross raw material input
³ Direct and indirect production related greenhouse gas emissions (CO₂e Scope 1 and 2, without vehicle fleet)



THIS IS HOW WE IN THE HETTICH GROUP ARE COMMITTED TO A SUSTAINABLE FUTURE

- **Certified to the stringent EMAS European environmental standard (including ISO 14001)**
at 6 European operating bases involving 12 companies, annual state approved environmental audits, proof of enhanced environmental performance and absolute compliance with the law, publication of annual environmental statements
- **Sustainability principles**
implemented at the company since 1993
- **Responsibility for energy and resource conservation**
manifested worldwide in the Hettich Code of Conduct
- **Reduction in CO₂ emission from 2016–2021**
Reduction in specific¹ CO₂ emissions² at production sites worldwide by 60 %
Reduction in absolute³ CO₂ emissions² at production sites worldwide by 40 %

¹ g CO₂ equivalent (CO₂e)/kg gross raw material input

² Direct and indirect production related greenhouse gas emissions (CO₂e Scope 1 and 2, without vehicle fleet)

³ Sum of all CO₂ equivalents (CO₂e) (Scope 1 and 2, without vehicle fleet)

- **Green electricity**
Procurement of all electricity from renewable energy sources at several operating bases since 2017.
Procurement of all electricity from renewable energy sources at all German operating bases since 2021.
- **Solar energy**
1,149,219 kWh of electricity from 2009 to 2021 from photovoltaic systems in Kirchleugern. Installation of over 2000 photovoltaic modules at the German Vlotho/Exter operating base in 2021
- **Sustainable mobility management**
Sustainable travel planning for the German operating bases, further expansion of e-mobility and charging stations in Germany and the Czech Republic, offers such as JobRad and JobTicket at the German operating bases
- **Awards for sustainable buildings**
at the Kirchleugern operating base, Germany: Green Building Award, best practice energy efficiency, Timber Construction Award NRW (North Rhine-Westphalia) for sustainable construction
- **Compliance officers for environmental matters in each company**
- **High quality for long product life**
Quality management system certified under ISO 9001
- **Dynamic set of rules on product constituents**
Critical or environmentally harmful product

constituents have been identified, assessed and regulated beyond legal requirements such as REACH or RoHS for over 15 years

- **Material related emission cuts**
Successful pilot project with CO₂ reduced steel; use of CO₂ reduced aluminium at KUHN, a Hettich Group company
- **Sustainable packaging solutions**
Recyclable materials, avoidance of composite packaging materials, reduced use of packaging materials, testing use of plastics with high recycle content and trays made from regrainulate as well as use of reusable packaging (pallets, wire mesh boxes, trays)
- **Multimodal transport**
Emissions reduced by using less CO₂-intensive means of transport such as rail or ship
- **Increased biodiversity**
Bee-friendly flowing meadows at the Spenge, Kirchleugern and Vlotho/Exter operating bases, Germany

WE HAVE ALREADY ACHIEVED A LOT AND STILL HAVE MANY MORE BIG PLANS AHEAD

Ongoing activities to reduce emissions across the supply chain, fitting existing buildings with renewable heating and cooling technologies, generating and purchasing electricity from renewable sources, climate change awareness workshops, incentives to use climate friendly transportation, improving the recyclability of our products or finding alternative sustainable materials in cooperation with our suppliers.

WE WANT TO

- **avoid CO₂ emissions**
- **continuously reduce remaining emissions**
- **become climate neutral at our operating bases**
- **conserve resources and increase our energy efficiency**
- **further optimise the recyclability of our products**
- **promote biodiversity at our operating bases**

