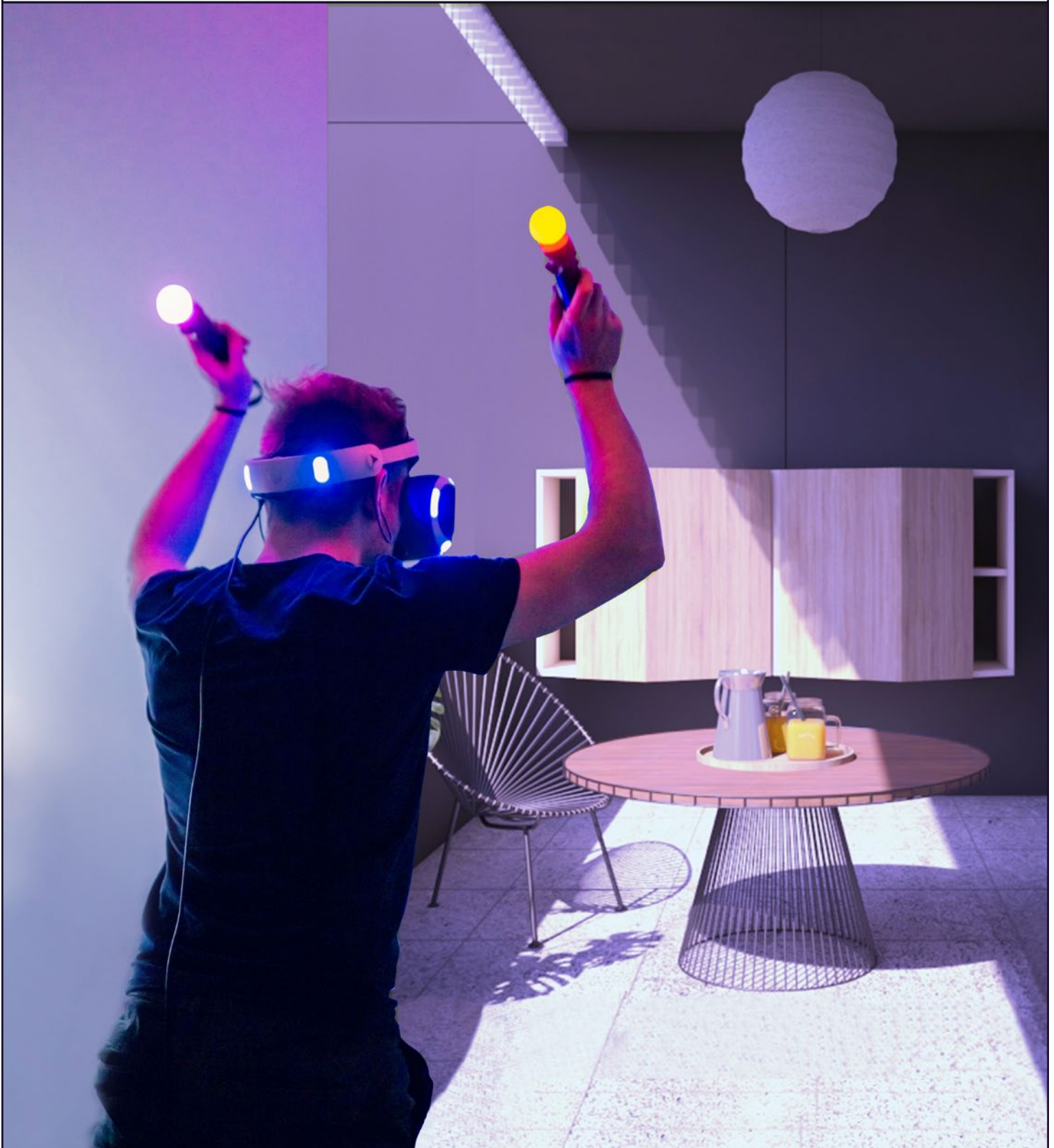


HOME ENTERTAINMENT FURNITURE IDEABOOK



Technik für Möbel

Hettich



Warranty

For Warranty
please refer to website.
www.hettich.com/in



Free Design Service:

Looking for Designs to liven up your Living Room, Bedroom, Bathroom & Kitchen. A dedicated team of highly qualified Interior Designers is at your service to provide customised design solution to suit every taste and budget at zero cost to you.

Free Consultation at your doorstep:

Looking for perfect Furniture Fittings solution. A dedicated team of highly qualified professionals is at your service to provide the perfect furniture fittings solution to suit your need and budget at zero cost to you.

Hettich Customer Care Service:

In today's fast paced and technologically advanced era, most of the organizations succumb to the pressure of staying ahead in the competition and often, end up neglecting the most critical aspect of business i.e. CUSTOMERS. Hettich, being a CUSTOMER CENTRIC organization, is very sensitive towards this tendency; hence, we constantly try to provide the best and quality driven products and services.

Enquiry & Customer Services

Toll Free : 1800 209 2096 (office hours)
Email: sales_enquiry@in.hettich.com
customer_services@in.hettich.com
www.hettich.com

Free Training Services:

Free Training Services for carpenters of trade partners and customers



Training Center Address:

Hettich Poddar Wood Work Institute
Plot No.2, First Floor,
DLF Industrial Estate - 1
Near NHPC Metro Station
Faridabad, Haryana

Email: info@hpwwi.com
Ph: 0129 - 4203888

HOME ENTERTAINMENT FURNITURE IDEABOOK



Hettich Manufacturing Plant, Indore, India



Hettich Forum, Kirchleugern, Germany



About us

The company's origins date back to 1888, when Karl Hettich began making the new clock component he had invented. By 1930, his descendants had diversified into furniture fittings, setting up production in East Westphalia – a Centre of the German furniture industry.

Today, Hettich, still family owned, has become an industry leader with a worldwide reputation. We're one of the world's largest manufacturers of high-quality furniture fittings, with over 6,000 employees in more than 100 countries.

The company's success has been built on four enduring values: quality, innovation, close cooperation with customers and absolute reliability. We work to inspire our customers with our ideas and our passion.



From Megatrend to Product Solution

Ever smaller living spaces in towns and cities, new life concepts and work models or the increasing demand for customisable furniture, Hettich provides exciting answers to the noticeable changes taking place in life and home living as a result of megatrends.

Under the Fascin[action] banner, Hettich is presenting exciting product solutions covering all aspects of what furniture buyers want: feel style, enjoy comfort, win storage.



www.hettich.com



“Entertainment is a sacred pursuit when done well.

When done well, it raises the quality of human life.”

Michael Chabon



Dive into virtual entertainment at home



Virtual reality is very much the reality these days and it has become one of the most engaging mode of entertainment for all age groups.

This hallway seating cum relaxing furniture is designed to let you enjoy your VR games/videos. It also provides you with a lot of storage space to help you out with your storage requirements.



Fittings Used

- AvanTech YOU Drawer System
- Franke Sofa Fitting
- KA 5740 Pocket Sliding
- Quadro Runner

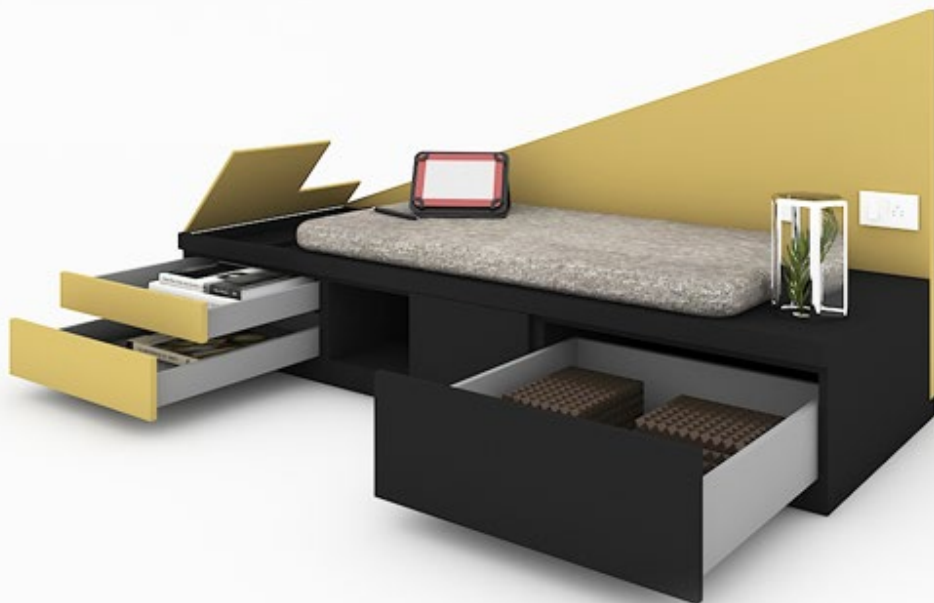
CMF Used

- Color White, Walnut Wood
- Material Prelam Board, Stainless Steel, Upholstery
- Finish Matte Suede, Chrome





A perfect place for doing tête-à-tête



Modes of entertainment come in many ways and it changes from person to person. Some find watching a movie entertaining while others find gossips a lot more entertaining.

This area is specially designed for a tête-à-tête between two friends while having their favourite healthy green tea. This area also holds a lot of storage space to keep your favourite books or rarely used household items.



Fittings Used

- AvanTech YOU Drawer System
- SlideLine M Sliding Fitting
- Franke Sofa Fitting

CMF Used

- Color Gothic Grey, Lemonade Yellow
- Material Prelam Board, Upholstery
- Finish Matte Suede





Kidsroom to a playroom at any time of the day



Kids are increasingly using mobiles and tablets indoors to keep themselves entertained. This has led to overall reduction of their physical activity.

This kids room furniture is inspired and designed to help kids play in the house by climbing, sliding or as they desire. This furniture, along with kids entertainment also provides ample storage space to store kids books, toys, games and clothes.

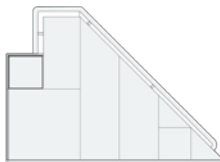


Fittings Used

- WingLine L Sliding Folding System
- Sensys Hinge
- KA Ball Bearing Runner
- Quadro Runner

CMF Used

- Color Gothic Grey, Pale Peach, Prairie Green
- Material Prelam Board, Steel, Upholstery
- Finish Matte Suede, Polished Ss





The balcony that smiles back



Everyone living in metro cities wants a balcony which helps them to unwind & relax while having their favourite fresh orange juice or their favourite tea.

This balcony unit is inspired and designed for those urban homes in which you can store your favourite things to drink and eat on one side and your gardening equipments on the other side. It houses a built-in ashtray for smokers to keep the balcony clean from leftover butts.



Fittings Used

- Sensys Obsidian Black Hinge

CMF Used

- Color White, Pale Peach, Pine Oak
- Material Prelam Board
- Finish Matte Suede





Vanity as the new Gen-Z entertainment zone



Washing your hands more frequently is the new normal, but then the vanity is not only for washing hands or checking out your makeup or hairstyle.

The modern-day vanities have become a place of entertainment; people are using their vanities for making their dancing or acting videos. This vanity is inspired and designed with premium Hettich fittings keeping the Gen-Z in mind.

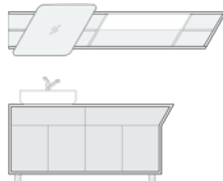


Fittings Used

- AvanTech YOU Drawer System
- WingLine L Sliding Folding Fitting
- SlideLine M Sliding Fitting

CMF Used

- Color Gothic Grey, Straw Balsam, Dove Grey
- Material Prelam Board, Mirror
- Finish Matte Suede Laminate



Different types of Drawer Systems



www.hettich.com



ArciTech

- Impress with running comfort and stability
- Colours: silver, anthracite, white and champagne
- Comfort functions: Silent System, Push to open Silent, Easys



Atira

- Striking, angular design
- Differentiate the efficient way
- Quadro drawer runner with a loading capacity of up to 50 kg



InnoTech

- Timeless classic
- Make production cost effective
- Quadro drawer runner with a loading capacity of up to 50 kg



CargoTech

- Simple and economical drawer system
- Compatible with quadro & telescopic runners
- Available in three depths 500 mm, 550 mm & 600 mm



AvanTech YOU

- Creative flexibility in slim and high-quality design
- Hidden working parts, perfect performance
- Colours: silver, anthracite and white
- Drawer runner and load classes: Actro YOU up to 10/40/70 kg
Quadro YOU 30 kg
- Comfort functions: Silent System, Push to open Silent, Easys



Maximal entertainment for minimalists



Minimalistic living is the new mantra being adopted by many people as part of their lifestyle and home.

The television unit is inspired and designed with an approach to minimize elements and give attention to details. It will bring bling to the living room along with providing ample storage space.



Fittings Used

- ArciTech Drawer System
- Quadro V6 Runner
- WingLine L Sliding Folding Fitting
- CUBE Shelving System

CMF Used

- Color Gothic Grey, Straw Balsam, Black Matte
- Material Prelam Board, Cube, Glass, Led Strip
- Finish Matte Suede Laminate, Powder Coated Black





Entertain yourself wherever you want



This modern day seating emphasizes on the pros of portability, which brings ease and comfort in our day to day to activities in the house.

This portable sitting is one such example which holds up a decent storage capacity so that you can sit and read or surf your phone wherever you want.



Fittings Used

- AvanTech YOU Drawer System
- Franke Sofa Fitting
- Quadro Runner

CMF Used

- Color Dove Grey, Teak Wood, Black Matte
- Material Prelam Board, Cube, Glass
- Finish Matte Suede Laminate, Powder Coated Black





www.hettich.com

No better entertainment than a Barbeque night



There is no better way to chill & party with friends than having a barbeque at night on your rooftop. Due to the pandemic, many people may avoid going to parties outside but may host small parties in their house itself.

This barbeque counter holds everything you will need for your rooftop party along with a washbasin to keep your hands clean.

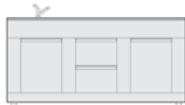


Fittings Used

- Quadro runner
- Sensys Hinge
- Silestone

CMF Used

- Color Misty Pine Oak, Soapstone, Desert Silver
- Material Prelam Board, Silestone
- Finish Matte Suede Laminate, Polished Stone





Create your own entertainment space



The modern-day housing is smart and functional. The interior design is done in a manner which not only adds more value to your space but also enables the furniture in serving multiple purposes.

This room divider is a one of a kind furniture partition which houses your objects of entertainment and also helps in organizing your space to create a room for your activity.

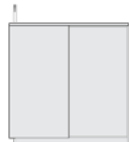


Fittings Used

- Quadro Duplex Runner
- SlideLine M Sliding Fitting
- Swivel Castor with brake

CMF Used

- Color Autumn Leaf, Frosty White
- Material Prelam Board
- Finish Gloss Laminate





www.hettich.com

The passionate pursuit of comfy pod



Pamper yourself with your favourite book and a soothing tea amidst a comfy seating. This cosy pod is inspired and designed for those avid readers who love to read up the whole book in a day while relaxing in their favourite spot at home.

It also has decent storage space to keep your favourite books and showcase your collectables.

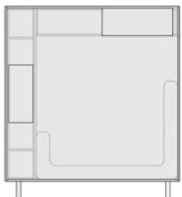


Fittings Used

- Quadro Duplex Runner
- SlideLine M Sliding Fitting
- Vertico Mono Sliding Fitting
- Franke Sofa Fitting
- Versa inside 60 Linear Light

CMF Used

- Color Ivory White, Teal
- Material Prelam Board, Upholstery
- Finish Gloss Laminate



Different types of Drawer Runners



www.hettich.com



Actro 5D

- Highest stability and filigree joints for unique furniture design
- Synchronised smooth running and up to 5 front panel adjustment functions
- Full extension runners up to 10/40/70 kg, nominal length up to 750 mm



Quadro Runner

- Extensive range of strong and durable runners
- Ball bearing principle and up to 4 front panel adjustment functions
- Partial extension runners up to 25 kg, full extension runners up to 10/30/50 kg



Quadro Duplex Drawer Runner

- With differential roller
- Approx. 33 mm over extension runner
- 60 kg load loading capacity to EN 15338, Level 2
- Galvanised steel



KA Ball Bearing Runner

- Reliable and maintenance-free for long lasting satisfaction
- Hardened steel balls
- Partial extension runners up to 12 kg full extension runners up to 136 kg, over extension runners up to 90 kg



FR Roller Runner

- Tried and tested, tolerance insensitive technology
- With integrated roll-out prevention
- Partial extension runners up to 25 kg, over extension runners up to 50 kg



www.hettich.com

Eat & chill in the lap of your bed hill



For some people, the best way of entertainment is watching a classic movie while laying on their beds. This furniture is inspired and designed especially for those people.

One can get this furniture in their bedroom to keep their laptop closer to them and binge-watch their favourite series.



Fittings Used

- AvanTech YOU Drawer System
- Lift Advanced HL Flap Lift Fitting

CMF Used

- Color Gothic Grey, Rioja Oak, Black
- Material Prelam Board, Steel
- Finish Matte Suede Laminate, Powder Coated Steel





When working out is your way of entertainment



In this hectic lifestyle, one needs to keep oneself physically and mentally fit. Hence working out becomes extremely important and for some people, it is like a mode of entertainment.

This one of its kind furniture will convert your house corner into a personal gym by holding all your necessary gym equipments.



Fittings Used

- Quadro Runner

CMF Used

- Color Dove Grey, Straw Balsam, Black
- Material Prelam Board, Steel
- Finish Matte Suede Laminate, Powder Coated Steel



More than just a television unit



The most popular form of home entertainment is watching television with your loved ones or just binge watching one’s web series alone.

This television unit is equipped to cater to your every entertainment need in the living room from watching a movie to reading your favourite book to playing your favourite music. It has ample storage space to handle all your storage needs.

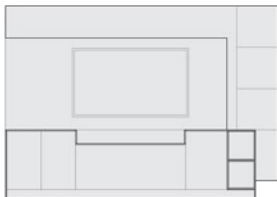


Fittings Used

- AvanTech YOU Drawer System
- Sensys Hinge

CMF Used

- Color Charcoal Grey, Shell Coral, Rioja Oak
- Material Prelam Board
- Finish Matte Suede Laminate





Designed for the dancer in you



Dance is the hidden language of the soul of the body, and a majority of people use dancing as a therapy. It freshens you up, energizes you, keeps you fit and also motivates you.

This furniture is made inspired and designed for the dancer in you. It projects your favourite choreographer's dance moves and the mirrors on the side helps you correct your posture and movements. It also houses a decent storage space and also can be used as a home theatre for your weekend movie nights.

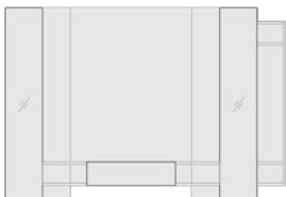


Fittings Used

- Quadro Duplex Runner
- SlideLine M Sliding Fitting
- Versa inside 60 Linear Light

CMF Used

- Color Gothic Grey, Straw Balsm, Frosty White
- Material Prelam Board, Mirror
- Finish Matte Suede Laminate
-





www.hettich.com

For the love of television



Studies indicate that avid TV watchers watch more than 150 hours of TV per month. It is an essential part of their daily lifestyle.

This TV unit is inspired and designed for these avid watchers who want a prime place for their TV sets coupled with decent storage.



Fittings Used

- AvanTech YOU Drawer System
- SlideLine M Sliding Fitting
- WingLine L Sliding Folding Fitting
- CUBE Shelving System
- Sensys Hinge

CMF Used

- Color Gothic Grey, Oak, Black Matte
- Material Prelam Board, Perforated Steel, Cube, Glass
- Finish Matte Suede Laminate, Powder Coated



Different types of Hinges



www.hettich.com



Sensys

- With or without integrated damping
- Clip on installation
- Comfort functions: Silent System, Push to open, Push to open Silent



Sensys Hinge for Glass Applications

- Sensys hinge with integrated Silent System,
- concealed hinge for clip on installation
- Mounting plate for glue mounting



Sensys Obsidian Black Hinge

- The multitasking hinge for all common door mounting situations
- Concealed hinge with clip on installation and integrated Silent System
- Quality classification under EN 15570, Level 3
- For door thickness of 15 - 24 mm
- Integrated overlay adjustment + 2 mm / - 2 mm
- Integrated depth adjustment + 3 mm / - 2 mm
- Height adjustment at mounting plate
- All visible parts in obsidian black
- Hinge arm material: steel in obsidian black
- Hinge cup material: steel in obsidian black



Onsys Hinge

- Concealed hinge with clip on installation and integrated Silent System
- Quality classification under EN 15570, Level 2
- For door thickness of 14 - 25 mm



Intermat Hinge

- Silent System can be fitted as an optional upgrade
- Clip on installation
- Comfort functions: Silent System, Push to open



Minimalistic design;
maximum appeal



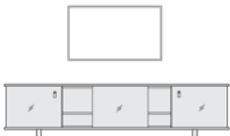
Its a truth that since the invention of television, our lifestyle has evolved into another dimension. These days watching TV has become an essential activity and we want our TV unit to be minimalistic but at the same time to be high utility.

This television unit is designed to be minimalistic and at the same time aesthetic with decent storage. It is a kind of TV unit which can be placed in any type of house.



- Fittings Used**
- SlideLine M for Glass
 - Glass to Glass Hinge
 - Galati Leather Handle

- CMF Used**
- Color Black Glass, Misty Pine Oak
 - Material Glass, Particle Board, Laminate
 - Finish Matte Suede





www.hettich.com

When you've got the gym at home, flaunt it



For some, body-building is a passion and they like to work out for a number of hours. It is a source of entertainment for many since it gives an adrenaline rush. These body-building passionates prefer to have their own personal gym in their house.

This home gym unit has been exclusively designed for such people to house all their equipments without impacting the aesthetic appeal of the room.

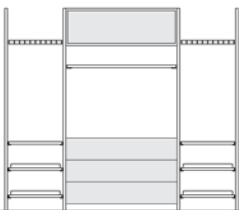


Fittings Used

- Amari 200
- Quadro Runner
- Amari Pullout Shelf
- Channel Line H with Versa Inside 60

CMF Used

- Color Black, Dove Grey
- Material Aluminum, Particle Board, Laminate
- Finish Matte Black, Aluminum Anodized





Not a makeshift kids room but ‘The kids room’



Kids are not kids any more. They are more knowledgeable about many things which the centennials don’t even know. Kids have evolved and so have their ways of playing and learning.

This kids room has been designed to specially cater to the Gen Z, who want their own personal space for studying and playing.

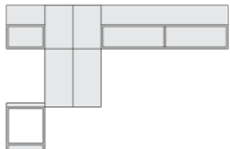


Fittings Used

- WingLine L Sliding Folding Fitting
- CUBE Shelving System
- Sensys Hinge

CMF Used

- Color Black, Dove Grey, Misty Pine Oak
- Material Aluminum, Particle Board, Laminate
- Finish Matte Black, Matte Suede





www.hettich.com

The joy of dinning while watching



Good food and a brilliant movie in the company of your family is the joy which we all desire. This mounted TV is placed in the dining area to make the family eat together & watch together.

To cater to your dining storage needs, we have designed this crockery unit which will help you keep everything handy while having your dinner.

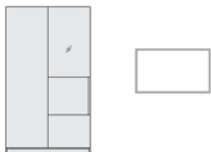


Fittings Used

- Quadro Runner
- Sensys Hinge
- Sensys Glass Hinge

CMF Used

- Color Moss
- Material Glass, Particle Board, Laminate
- Finish Matte Black, Matte Suede





www.hettich.com

Centre of attraction for guests; fun for the entire family



The living area is the most active area of a house. Apart from being the space where guests are attended to, it also serves as an area where the entire family spends quality time with their family. So, it needs to give the vibes of being the centre of attraction while staying in the area of entertainment for the whole family.

This TV unit is designed keeping the above factors in mind, which make it highly appealing with ample storage space to store all your unique gifts, books and board games.

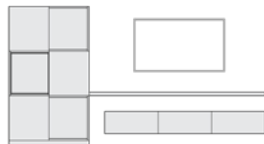


Fittings Used

- Slideline M Sliding Fitting
- Quadro Runner
- Mini Flat Plus
- Channel Line H with Versa Inside 60

CMF Used

- Color Lemonade Yellow, Misty Grey, Misty Pine Oak
- Material Particle Board, Laminate
- Finish Matte Suede



Hettich Innovative Fittings



www.hettich.com



ViZard

- Fully integrated flap fitting
- Integrated soft opening and soft closing
- Flap weight up to 15 kg



ComfortSpin

- Movable platform not only turns contents through 360 degrees but also moves them out slightly
- Making everything easy to reach



LegaMove

- Power assisted column system
- Lifting capacity up to 40 kg
- Double telescoping with a stroke length of 489 mm
- Outer column 90 x 90 mm
- Aluminium silver anodised or powder coated in white
- All inclusive system for creating furniture to suit any specific need.
- Wireless handset for wireless installation flexibility



CUBE

- Functional and design-oriented
- It is easily possible to mount doors using hinges, Making the door self & soft closing to its perfection



WingLine L

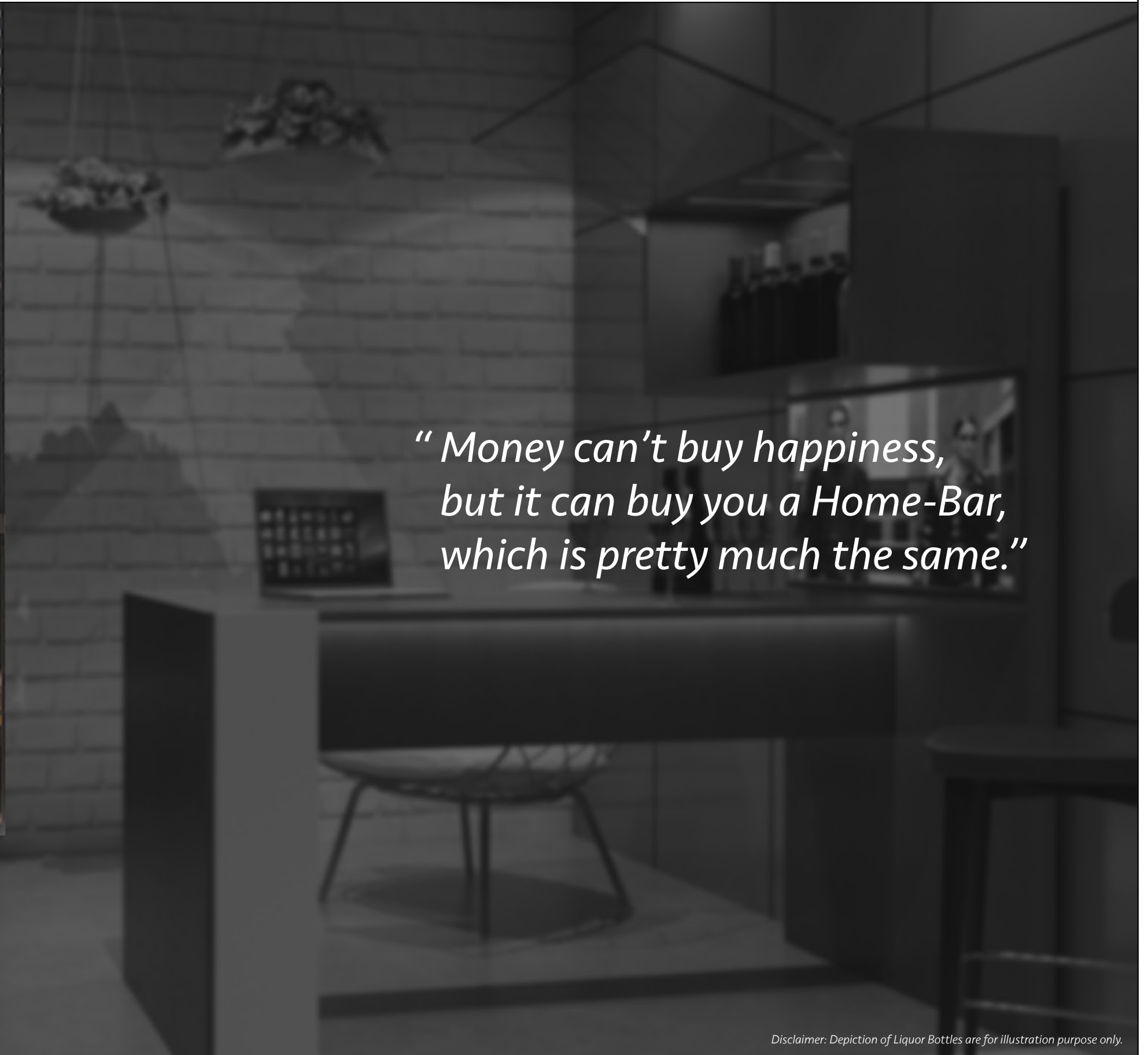
- Overlay door position
- Push / Pull to move
- Door wing weight up to 25 kg

Home-Bar

Entertainment Furniture Designs



www.hettich.com



*“ Money can’t buy happiness,
but it can buy you a Home-Bar,
which is pretty much the same.”*

Disclaimer: Depiction of Liquor Bottles are for illustration purpose only.



www.hettich.com

Work hard; party harder at home



In this fast-paced lifestyle where people’s raison d’être is to work hard and party harder, we have designed a bar unit, especially for those dynamic professionals.

The Hettich’s prime fitting LegaMove makes this a hidden bar which can be used as a working desk by day and work & chill by evening.



Disclaimer: Depiction of Liquor Bottles are for illustration purpose only.

- Fittings Used**
- LegaMove Lifting Column
 - SlideLine M Inset Sliding Fitting
 - Sensys Glass Hinge
 - Quadro Runner

- CMF Used**
- Color Gothic Grey, Teak Wood
 - Material Prelam Board, Glass
 - Finish Matte Suede





www.hettich.com

Amplified home-bar in a simplified design



What is a better way to relax than having your favourite reserved red wine accompanied by your favourite novel and soulful jazz!

That's a perfect evening for many of you which is now possible by getting this finely detailed home-bar designed with premium Hettich fittings. It can provide both storage and organization for your favourite wine and book collection.



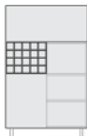
Disclaimer: Depiction of Liquor Bottles are for illustration purpose only.

Fittings Used

- KLS 30 Flap Fitting
- Sensys Hinge
- KA Ball Bearing Runner

CMF Used

- Color Lemonade Yellow, Straw Balsm, Shore Blue
- Material Prelam Board, Steel
- Finish Matte Suede Laminate, Chrome Plated





The hidden bar for the multi-purposers



The times have changed where you buy different furniture for different uses. Nowadays, people want multi-purpose furniture which not only saves space but is also easy on their pocket.

This living room furniture is one prime example of such multi-purpose furniture which uses the dead space of your home and converts it into a beautiful storage cum showcase along with the ability to transform itself into a bar at the push of a button.



Disclaimer: Depiction of Liquor Bottles are for illustration purpose only.

Fittings Used

- LegaMove Lifting Column System
- CUBE Shelving System
- AvanTech YOU Drawer System
- Sensys Hinge
- SuperSpot Eco Spot Light

CMF Used

- Color Slate Grey, Straw Balsam, Black Matte
- Material Prelam Board, Cube, Glass
- Finish Matte Suede Laminate, Powder Coated Black





The elite bar for the connoisseurs



Rare and special collection of liquor needs an elite and luxurious bar. This bar unit is inspired and designed for those rare collections.

It has aesthetics which give it a very luxurious look to suit any living area. It also houses an ample storage space to cater to all your storage needs.



Disclaimer: Depiction of Liquor Bottles are for illustration purpose only.

Fittings Used

- AvanTech YOU Drawer System
- SlideLine M Sliding Fitting
- Sensys Hinge
- Quadro Runner
- Versa inside 60 Linear Light

CMF Used

- Color Lemonade Yellow, Gothic Grey
- Material Prelam Board, Steel
- Finish Matte Suede Laminate, Chrome Plated





www.hettich.com

Turn any night into your Friday night



Why wait for the whole week when you can turn any night into a Friday night. Get this home-bar to turn any tiring day into a relaxing Friday night.

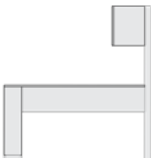
This unit is loaded with all your entertainment needs and ample space for storage.



Disclaimer: Depiction of Liquor Bottles are for illustration purpose only.

- Fittings Used**
- Vizard Integratable Flap Fitting
 - Cargo IQ 200 Bottle Pull-Out

- CMF Used**
- Color Khaki, Mocha
 - Material Prelam Board, Glass
 - Finish Gloss Laminate



Hettich Franke Seating System

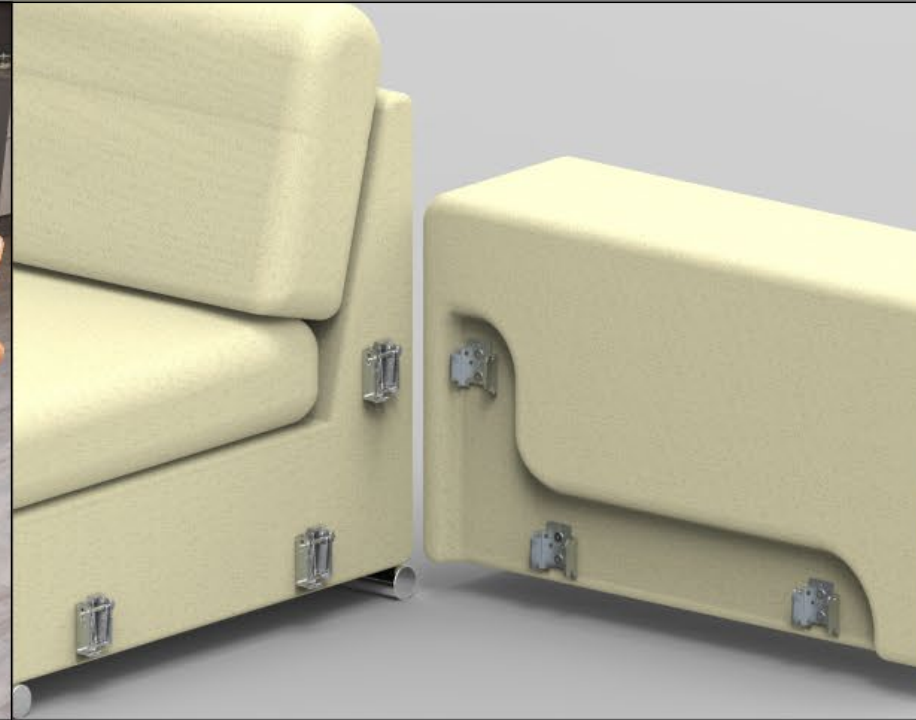


www.hettich.com



ProFlex

- The ProFlex can be switched from various positions. This ensures a comfortable adjustment and a reduction of variants
- Wide adjustment area up to 135°, fine notches in 5° steps



CoFix M

- Makes easy work of dismantling furniture and reassembling it at the new location
- Reduces your costs across the value chain



PowerFlex

- With a narrow width and compact construction it allows a variety of installation possibilities
- Fixation by screwing or welding



Mosys

- Motor action with neck-section integrated in inner frame and adjustable foot-section
- All necessary drilling can be done automatically

ElektroLift 80 with AxosDrive

- No need to modify the frame construction
- Component parts can be easily fixed to the bed frame by means of standard screws
- Few parts, easy to assemble thanks to the integrated SMPS power supply unit
- Less customer claims: the surrounding bed frame protects the adjustable system
- Cost reduction due to decreased transport volume
- Flat, compact as its height is only about 80 mm, therefore suitable for all bed bases
- It is possible to use the space underneath the bed base as the foot section can be raised manually

Registered & Head Office:
Hettich India Private Limited
302, Durolite House,
Opp. SAB TV, New Link Road,
Andheri (West), Mumbai - 400 053
Phone: +91 22 2674 3289/3356/4089
Fax: +91 22 2674 3267

Delhi Office:
Hettich India Private Limited
A-26/4, 1st floor,
Mohan Co-operative Industrial Estate,
New Delhi - 110 044
Phone: +91 11 4889 4000, 4889 4005
Fax: +91 11 4889 4044

Vadodara Factory:
Plot No. 304, Dhanora,
Nandesari Road,
Near ECPL,
Village - Dhanora - 391 346
Dist. - Vadodara
Tel: + 91 26 5656 9003

Indore Factory:
Plot No. 1, Sector - 5,
Mhow - Neemuch Road,
Opp Lupin Ltd, Pithampur
Industrial Area, Pithampur
Madhya Pradesh -454 774

Application Centres:

New Delhi:
61, Panchkuian Road,
New Delhi - 110 001
Ph. No. : +91 11 2358 0713,
2358 4603

Kolkata:
2nd Floor, Unit Number 2A,
Tirumala 22,
East Topsia Road,
Kolkata - 700 046
Ph. No. : +91 85850 44725

Bangalore:
Adventz Center, Ground Floor 28,
Cubbon Road, Shivaji Nagar,
Bangalore - 560 001
Ph. No. : +91 80 4530 0400,
4530 0401

Chandigarh:
2nd Floor, Aspire Tower,
Plot no. 55, Industrial
& Business park, Phase 1,
Chandigarh - 160 002
Ph. No. : +91 93 1755 7195

Training Center Address:
Hettich Poddar Wood Work Institute
Plot No.2, 1st Floor, DLF Industrial Estate-1
Near NHPC Metro Station,
Faridabad- Haryana
Ph: 0129 - 4203888
Email: info@hpwwi.com

Mumbai:
202, Durolite House, Opp. SAB TV,
New Link Road, Andheri (West),
Mumbai - 400 053
Ph.No. : +91 22 2639 9707

Hyderabad:
" Sai Krishna "
797 - A, Road No. 36,
Jubilee Hills,
Hyderabad - 500 034
Ph. No. : +91 40 2355 8994

Kochi:
41/2062D, 2nd Floor
Palarivattom signal
junction, NH 47 By-pass,
Kochi - 682 028
Ph. No. : +91 93 4900 3909

Chennai:
"Heavitree", Ground Floor,
47, Spur Tank Road,
Chetpet, Chennai - 600 031
Ph. No. : +91 44 4263 7227

Ahmedabad:
1st Floor, Unit No. 102,
Safal Pegasus,
Anand Nagar,
Ahmedabad - 380 015,
Ph. No. : +91 79 4032 2824

Indore:
Office No.106 and 107-A,
"Brilliant Titanium",
Plot No.9, Scheme No.78, Part-II,
Indore - 452 010, Madhya Pradesh,
Ph. No. : +91 93 0171 7343

Enquiry & Customer Services
Toll Free : 1800 209 2096 (office hours)
Email: sales_enquiry@in.hettich.com
customer_services@in.hettich.com
www.hettich.com

Scan QR Code



Visit us online:

www.hettich.com



Master Catalogue



CargoTech
Master Catalogue



Interested?
Explore Design options



HOME ENTERTAINMENT FURNITURE IDEABOOK

Hettich India Private Limited
302, Durolite House,
Opp. SAB TV, New Link Road,
Andheri (West), Mumbai - 400 053
Phone: +91 22 2674 3289/3356/4089
Fax: +91 22 2674 3267

Enquiry & Customer Services
Toll Free : 1800 209 2096 (office hours)
Email: sales_enquiry@in.hettich.com
customer_services@in.hettich.com
www.hettich.com

Home Entertainment Furniture | IdeaBook | August 2020

Technik für Möbel

