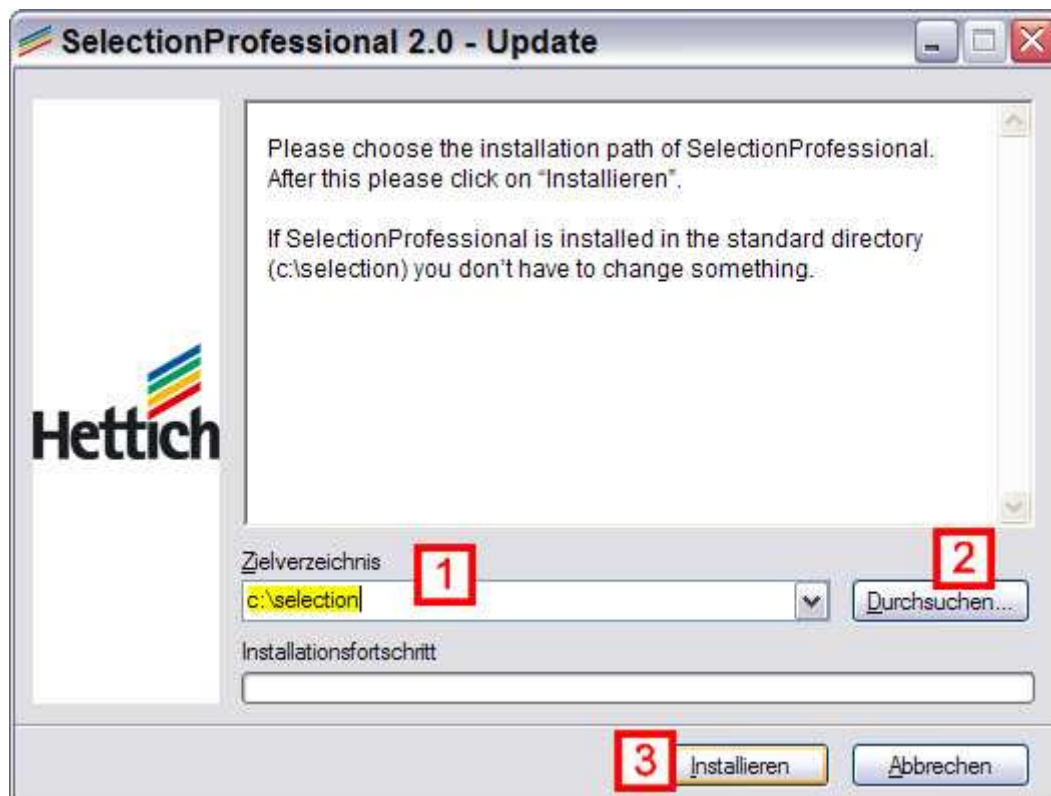


SelectionProfessional 2.0 – Corpus library expansion

Content: Corpus library expansion of material thickness 16mm and 18mm.

Please download the update from the box on the right side and save it locally on your computer.

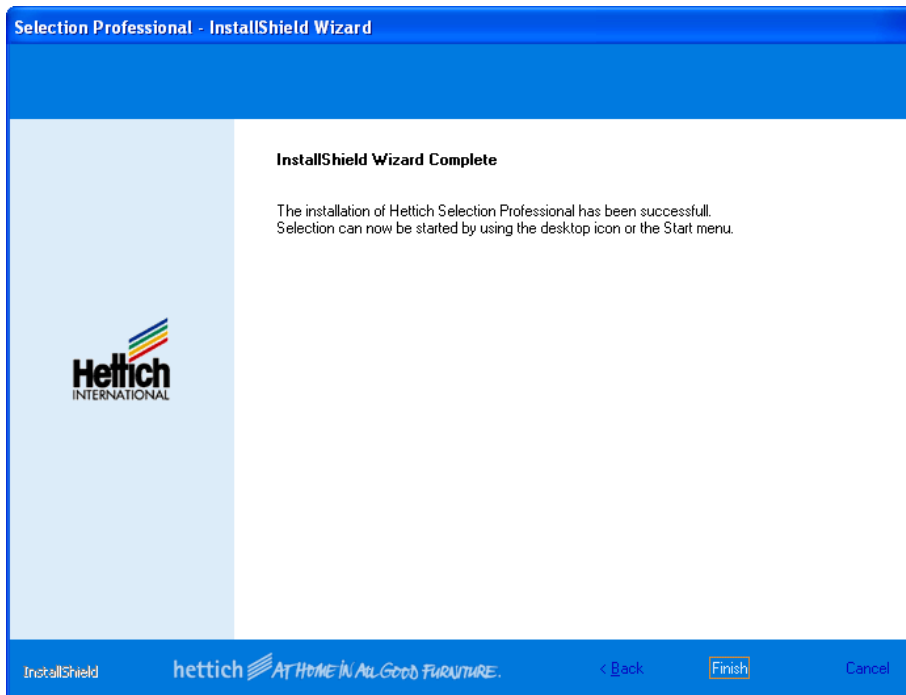
Finally start the program by double clicking on the left mouse button. The following window would open:



Please enter a folder name for installing SelectionProfessional in the Zielverzeichnis (1). If you do not want to change the folder for installation, then leave this blank. To select another folder, please use the option „Durchsuchen“ (2).

After the correct folder for installing SelectionProfessional is selected, click on „Installieren“ (3).

The installation of SelectionProfessional is complete, when the notification *“InstallShield Wizard completed”* appears. Click on *“Finish”*.



At the end, the instruction is displayed, that, the first start of SelectionProfessional with administrator rights is to be executed. Click in this notification on *“OK”*.



The expansion of the corpus library to 16 mm and 18 mm takes place now. When you click on *“Open”* in designer, you will find the new cabinets.