



Planning Examples  
**SelectionProfessional**

Technik für Möbel

  
**Hettich**

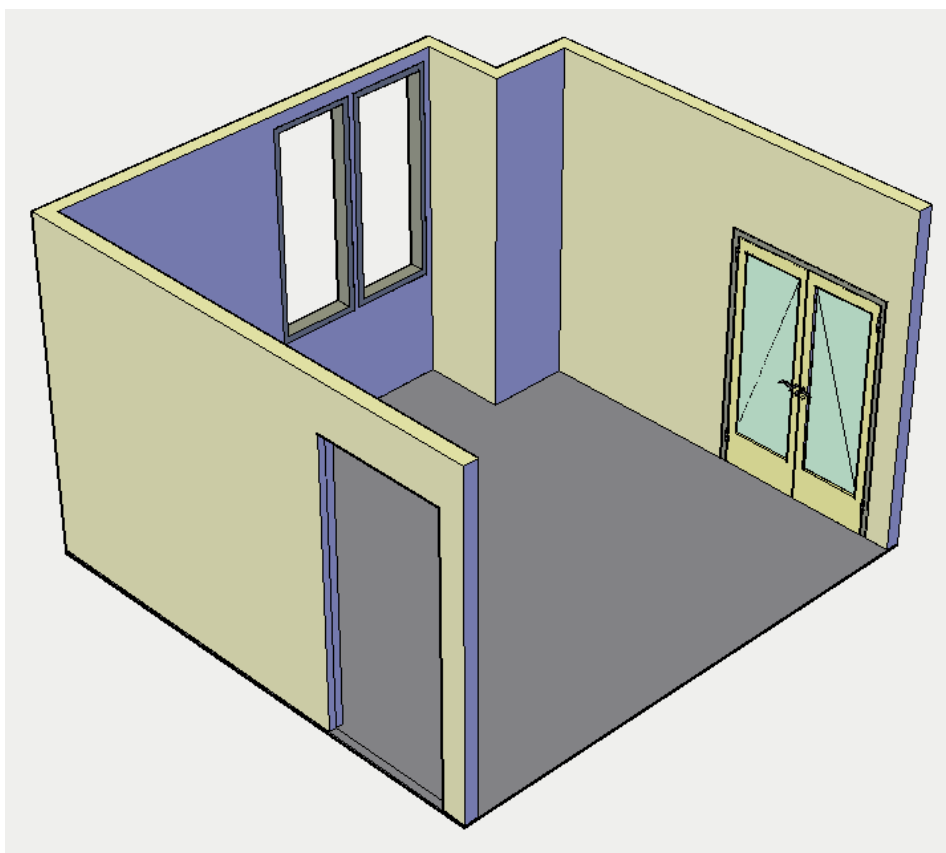
## **Table of contents**

<b>1. Kitchen Project</b> .....	<b>3</b>
1.1 Floorplan according to customer drawing / measurement.....	3
1.2 Selection of furniture from library .....	3
1.3 Creation of overview for customer presentation .....	4
1.4 Creation of production documents .....	7
<b>2. Living Room Project</b> .....	<b>11</b>
2.1 Floorplan according to customer drawing / measurement.....	11
2.2 Construction of cabinets according to customer specification in the Designer..	11
2.3 Creation of overview for customer presentation .....	12
2.4 Creation of production documents .....	15
<b>3. Office Project</b> .....	<b>18</b>
3.1 Floorplan according to customer drawing / measurement.....	18
3.2 Construction of cabinets according to customer specification in the Designer, selection of standard cabinets from the library .....	18
3.3 Creation of overview for customer presentation .....	19
3.4 Creation of production documents .....	20
<b>4. Bathroom Project</b> .....	<b>22</b>
4.1 Floorplan according to customer drawing / measurement.....	22
4.2 Creation of overview for customer presentation .....	23
4.3 Creation of production documents .....	24

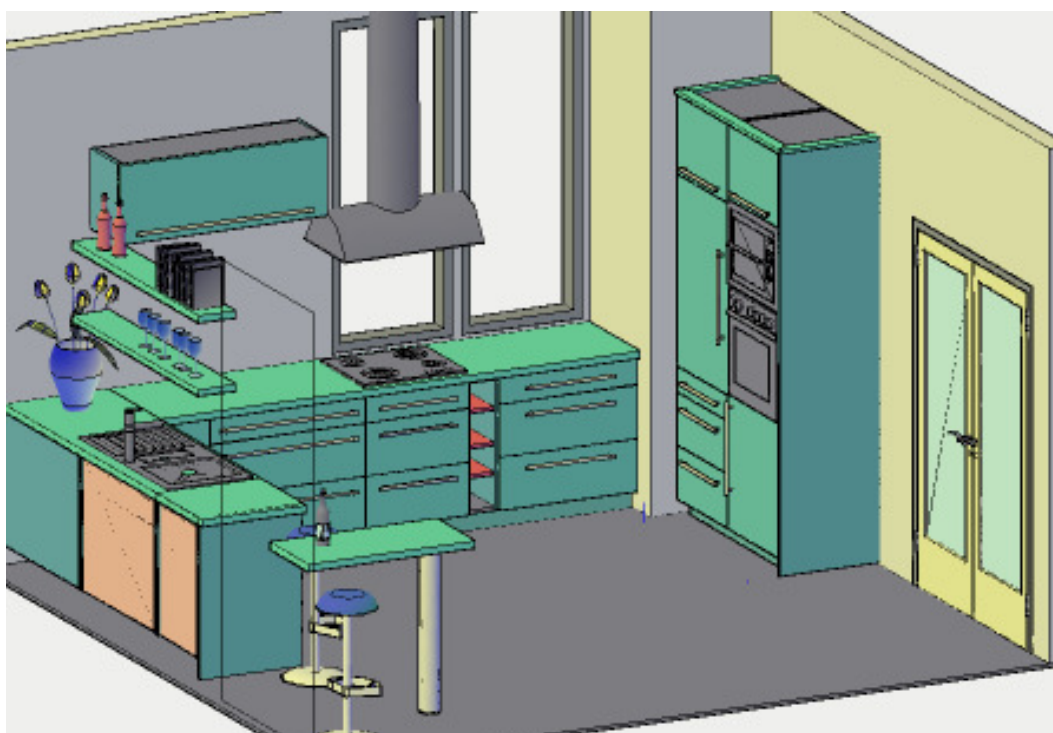


# 1. Kitchen Project

## 1.1 Floorplan according to customer drawing / measurement



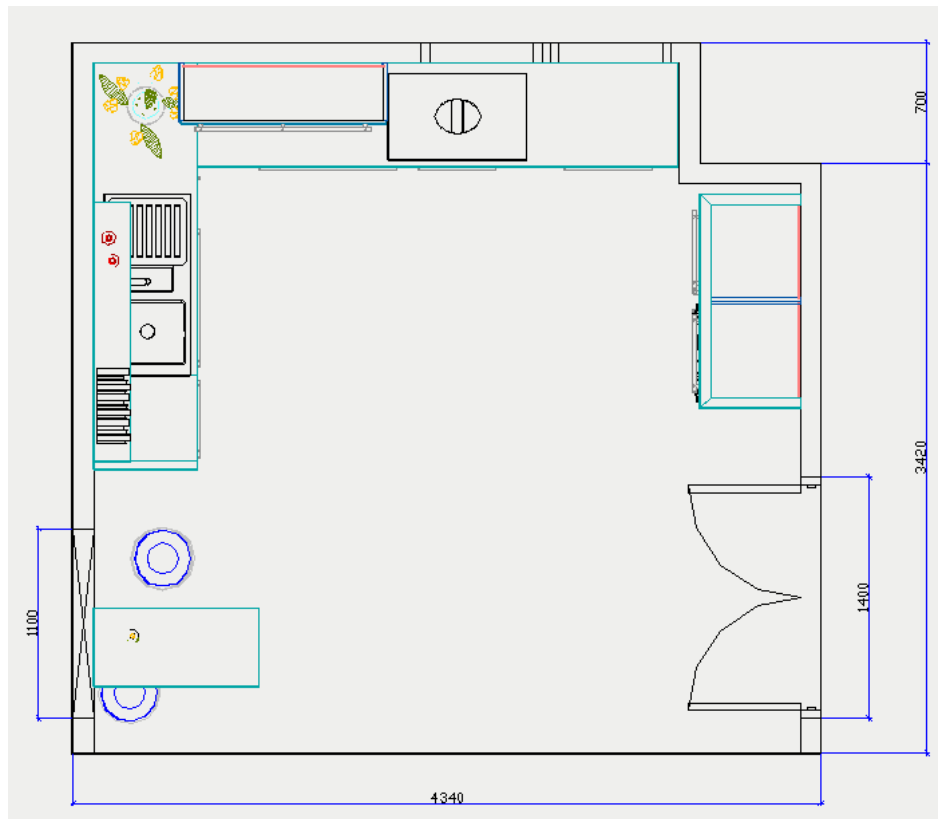
## 1.2 Selection of furniture from library



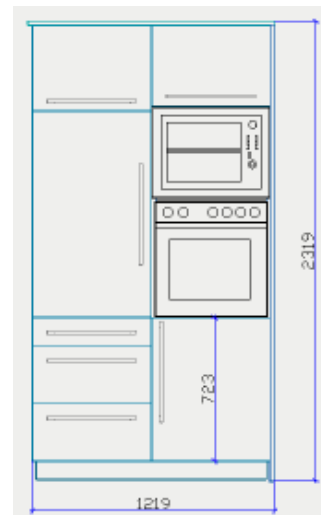
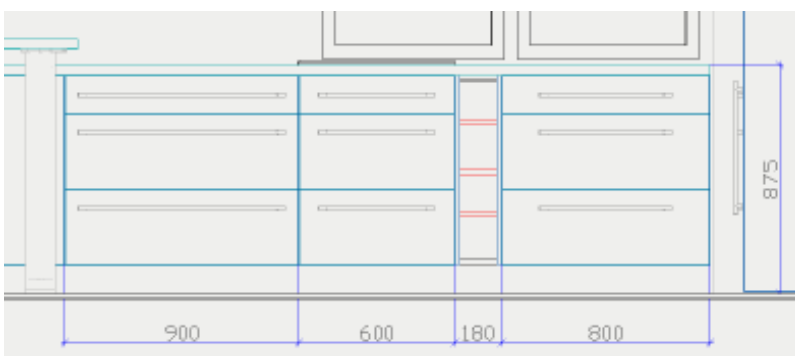


## 1.3 Creation of overview for customer presentation

### 1.3.1 Top view



### 1.3.2 View with measurements





1.3.3 Perspective with surfaces






### 1.3.4 Suggestion for surface variants





## 1.4 Creation of production documents

### 1.4.1 Hettich order list

<b>Hettich Bestellliste (kumuliert)</b>			
Auftrag: Kueche_kitchen_1		Technik für Möbel	
Pos.	Menge	Bestellnummer	Typ
1	2	9079653	Ablängbare Quertraverse 600 mm
2	1	49207	Dreiviertelkreis-Drehboden 820
3	12	46642	Bodenträger Duplo
4	30	77911	Frontbefestigung mit Spreizzapfen
5	2	9079618	Gasdruckfeder 150N
6	2	9079624	Gasdruckfeder 300N
7	38	61854	Gleiter
8	3		Griff_45714
9	1		Griff_45721
10	1	9071116	Griff Salvia <-> 2 x 480 mm

### 1.4.2 Cutting list (production)

<b>Holz-Stückliste (kumuliert)</b>							
Auftrag: Kueche_kitchen_1			Technik für Möbel				
Pos.	Menge	Beschreibung	Länge	Breite	Dicke	Fläche	Material
1	1	Arbeitsplatte	862.00	585.00	38.00	0.504	FPY_38mm
2	1	Arbeitsplatte	500.00	600.00	38.00	0.300	FPY_38mm
3	1	Arbeitsplatte	2350.00	600.00	38.00	1.410	KF_A_1-8
4	1	Arbeitsplatte	600.00	2790.00	38.00	1.674	KF_A_1-8
5	1	Arbeitsplatte	450.00	960.00	38.00	0.432	KF_A_1-8
6	2	Arbeitsplatte	1500.00	210.00	38.00	0.630	KF_D_3-014
7	1	Korpuseite	2300.00	580.00	19.00	1.334	FPY_D_3-014
8	1	Sockelblende	2899.00	110.00	19.00	0.319	KF_A_1-8
9	1	Sockelblende	1819.00	110.00	19.00	0.200	KF_A_1-8
10	1	Kranzleiste	1240.00	60.00	19.00	0.074	KF_A_1-8
11	1	Sockelblende	1162.00	110.00	19.00	0.128	KF_A_1-8
12	2	Kranzleiste	580.00	60.00	19.00	0.070	KF_A_1-8
13	4	Korpuseite	2200.00	560.00	19.00	4.928	KF_D_3-014

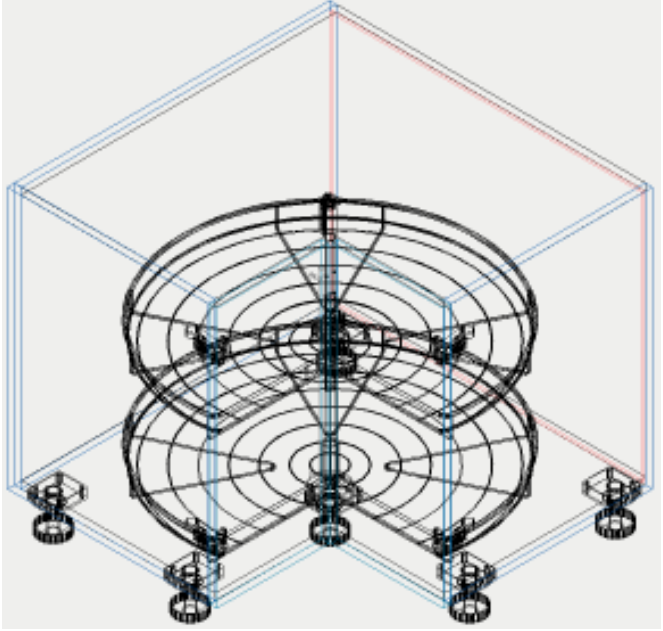
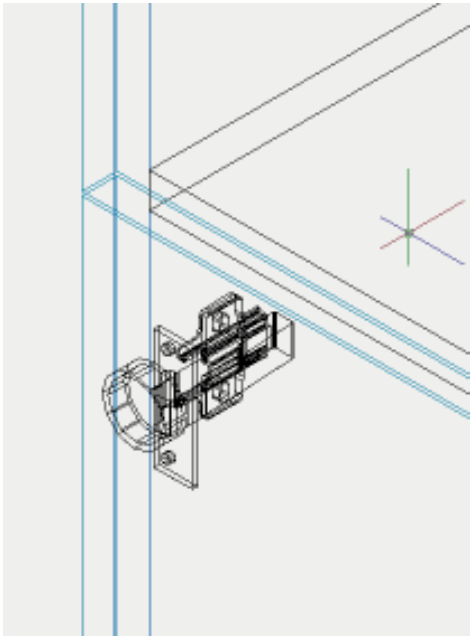
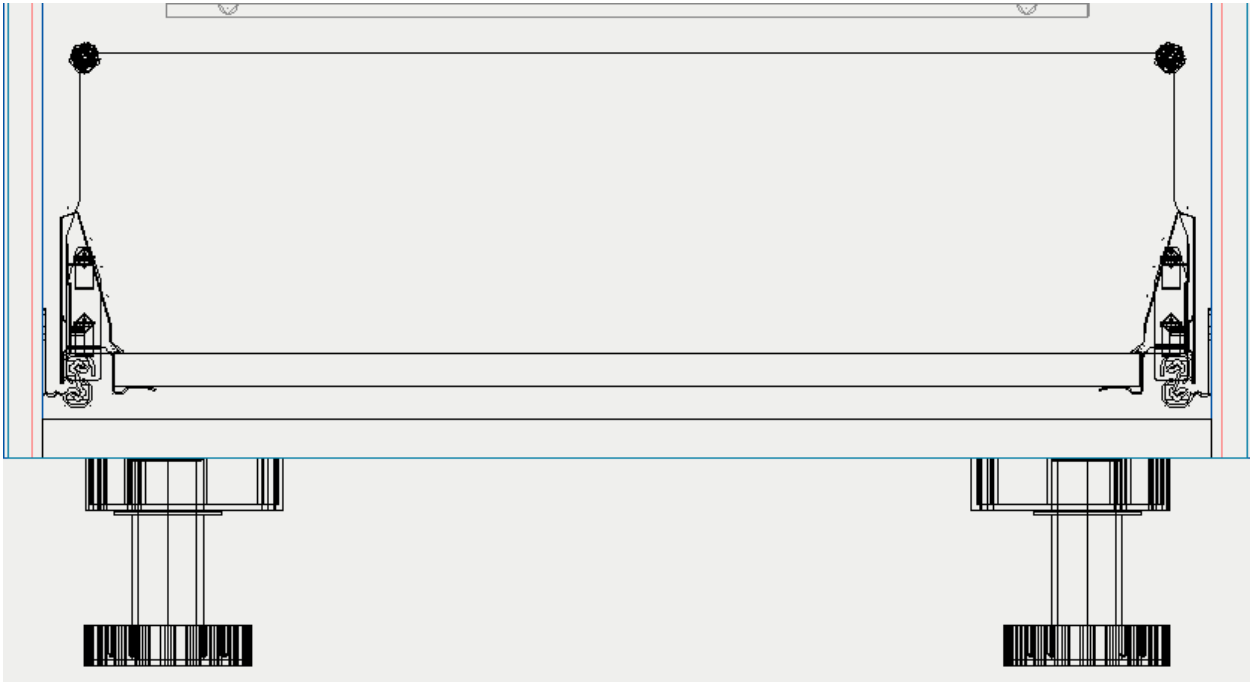


## 1.4.3 Cutting list (assembly)

<b>Holz-Stückliste (Korpus einzeln)</b>							
<b>Auftrag: Kueche_kitchen_1</b>				<b>Technik für Möbel</b>			
<b>Pos.</b>	<b>Menge</b>	<b>Beschreibung</b>	<b>Länge</b>	<b>Breite</b>	<b>Dicke</b>	<b>Fläche</b>	<b>Material</b>
<b>Korpusname: UE900_DK_2T</b>							
1	1	Unterboden	872.00	891.00	19.00	0.777	KF_D_3-014
2	1	Oberboden	872.00	891.00	19.00	0.777	KF_D_3-014
3	1	Korpusseite	727.00	891.00	19.00	0.648	KF_D_3-014
4	2	Korpusseite	727.00	560.00	19.00	0.814	KF_D_3-014
5	1	Tuer rechts	723.00	324.80	19.00	0.235	KF_D_3-014
6	1	Tuer links	723.00	324.80	19.00	0.235	KF_D_3-014
7	1	Rueckwand	699.00	882.00	8.00	0.617	ES_MAT_BP
<b>Korpusname: U900_2FA_1BL</b>							
8	1	Unterboden	862.00	545.00	19.00	0.470	KF_D_3-014
9	2	Traverse	862.00	80.00	19.00	0.138	KF_D_3-014
10	2	Korpusseite	727.00	560.00	19.00	0.814	KF_D_3-014
11	2	SchubkBlende	288.00	896.00	19.00	0.516	KF_D_3-014
12	1	SchubkBlende	143.00	896.00	19.00	0.128	KF_D_3-014
13	1	Rueckwand	727.00	872.00	8.00	0.634	ES_MAT_BP
<b>Korpusname: U500_5S</b>							
14	2	Korpusseite	727.00	560.00	19.00	0.814	KF_D_3-014
15	1	Unterboden	462.00	545.00	19.00	0.252	KF_D_3-014
16	2	Traverse	462.00	80.00	19.00	0.074	KF_D_3-014
17	5	SchubkBlende	143.00	496.00	19.00	0.355	KF_D_3-014
18	1	Rueckwand	727.00	472.00	8.00	0.343	ES_MAT_BP
<b>Korpusname: U900_2FA_1BL</b>							
19	1	Unterboden	862.00	545.00	19.00	0.470	KF_D_3-014
20	2	Traverse	862.00	80.00	19.00	0.138	KF_D_3-014
21	2	Korpusseite	727.00	560.00	19.00	0.814	KF_D_3-014
22	2	SchubkBlende	288.00	896.00	19.00	0.516	KF_D_3-014
23	1	SchubkBlende	143.00	896.00	19.00	0.128	KF_D_3-014
24	1	Rueckwand	727.00	872.00	8.00	0.634	ES_MAT_BP
<b>Korpusname: U600_2FA_1S</b>							
25	2	Korpusseite	727.00	560.00	19.00	0.814	KF_D_3-014
26	1	Unterboden	562.00	545.00	19.00	0.306	KF_D_3-014
27	2	Traverse	562.00	80.00	19.00	0.090	KF_D_3-014



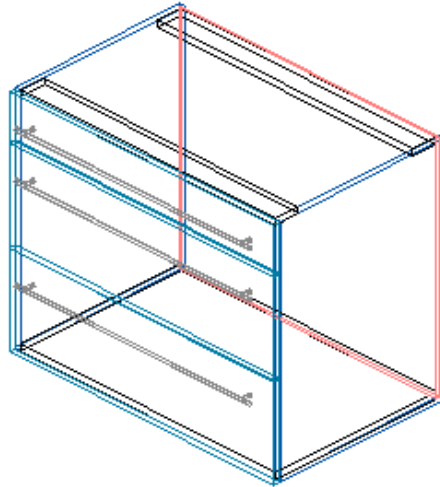
1.4.4 Cabinet views



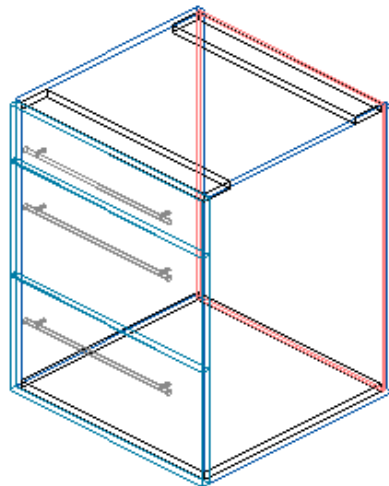


### 1.4.5 Carcase overview

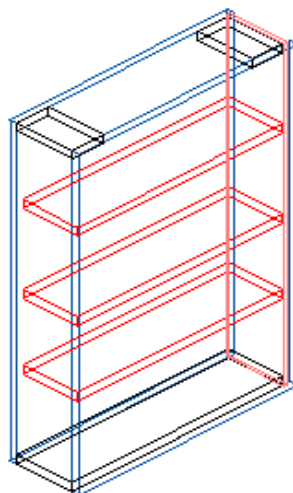
Menge	Korpusname	Auftrag	Artikelmass
1	U900_2FA_1BL	Kueche_kitchen_1	900.00 x 727.00 x 560.00



1	U600_2FA_1S	Kueche_kitchen_1	600.00 x 727.00 x 560.00
---	-------------	------------------	--------------------------



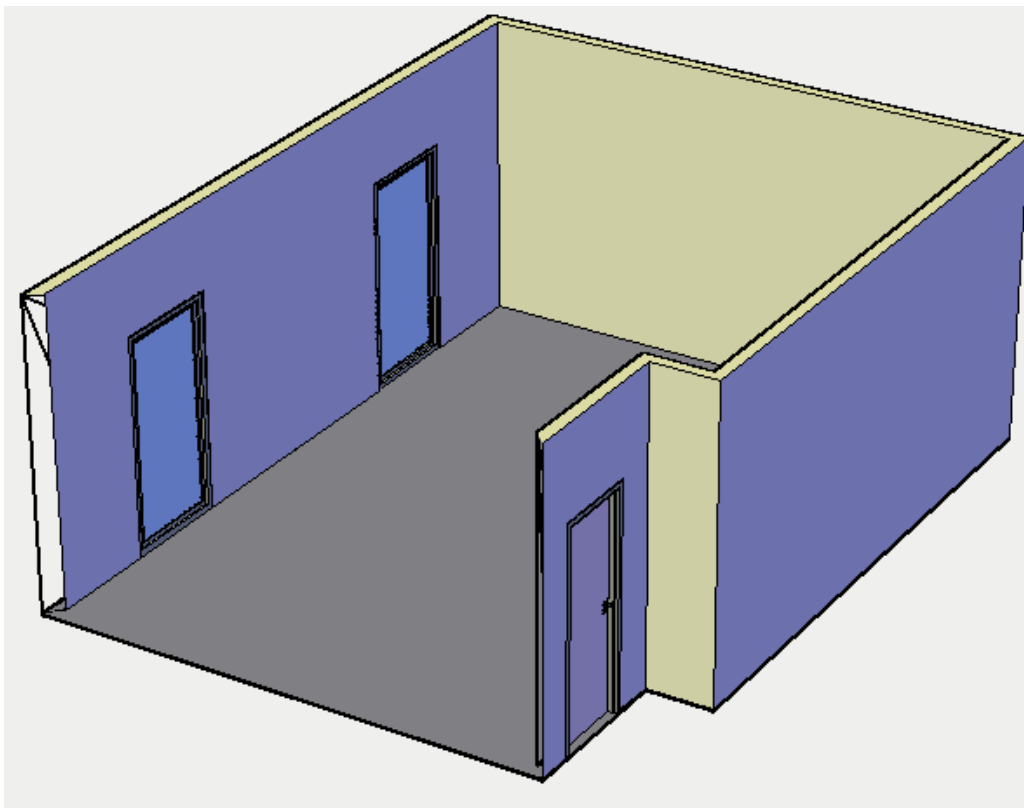
1	U180_R	Kueche_kitchen_1	180.00 x 727.00 x 560.00
---	--------	------------------	--------------------------



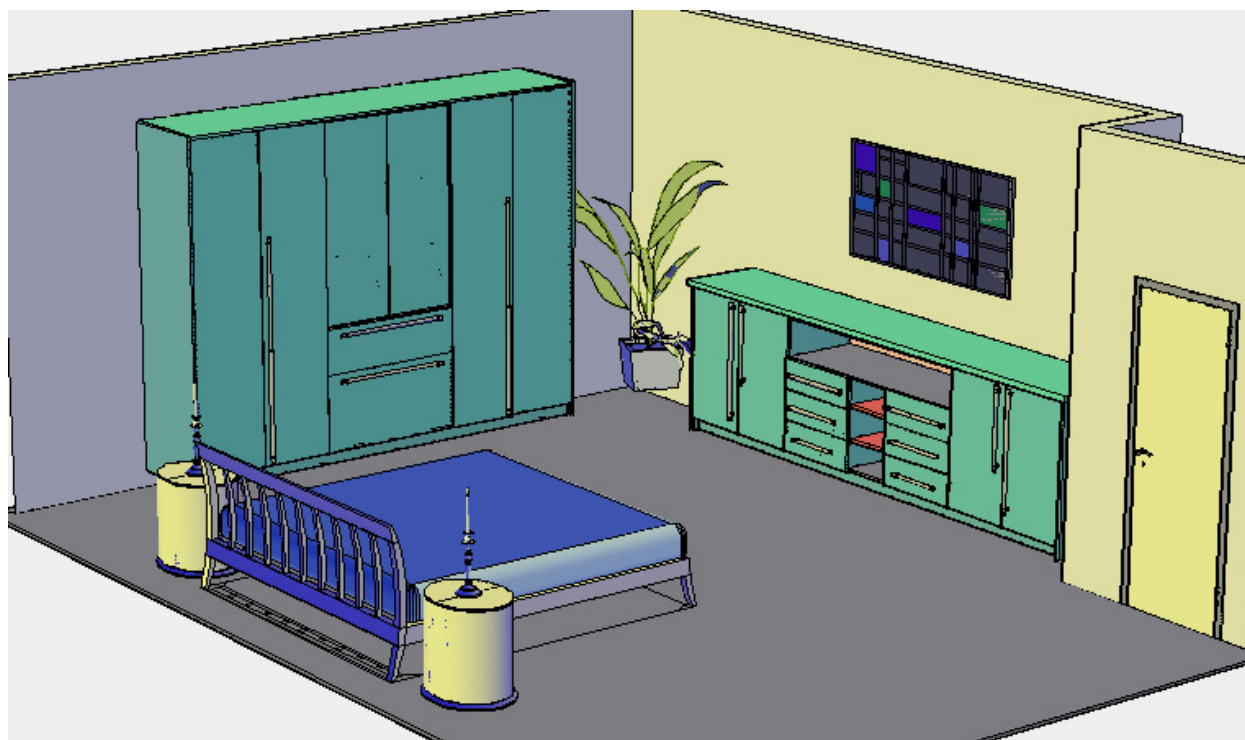


## 2. Living Room Project

### 2.1 Floorplan according to customer drawing / measurement



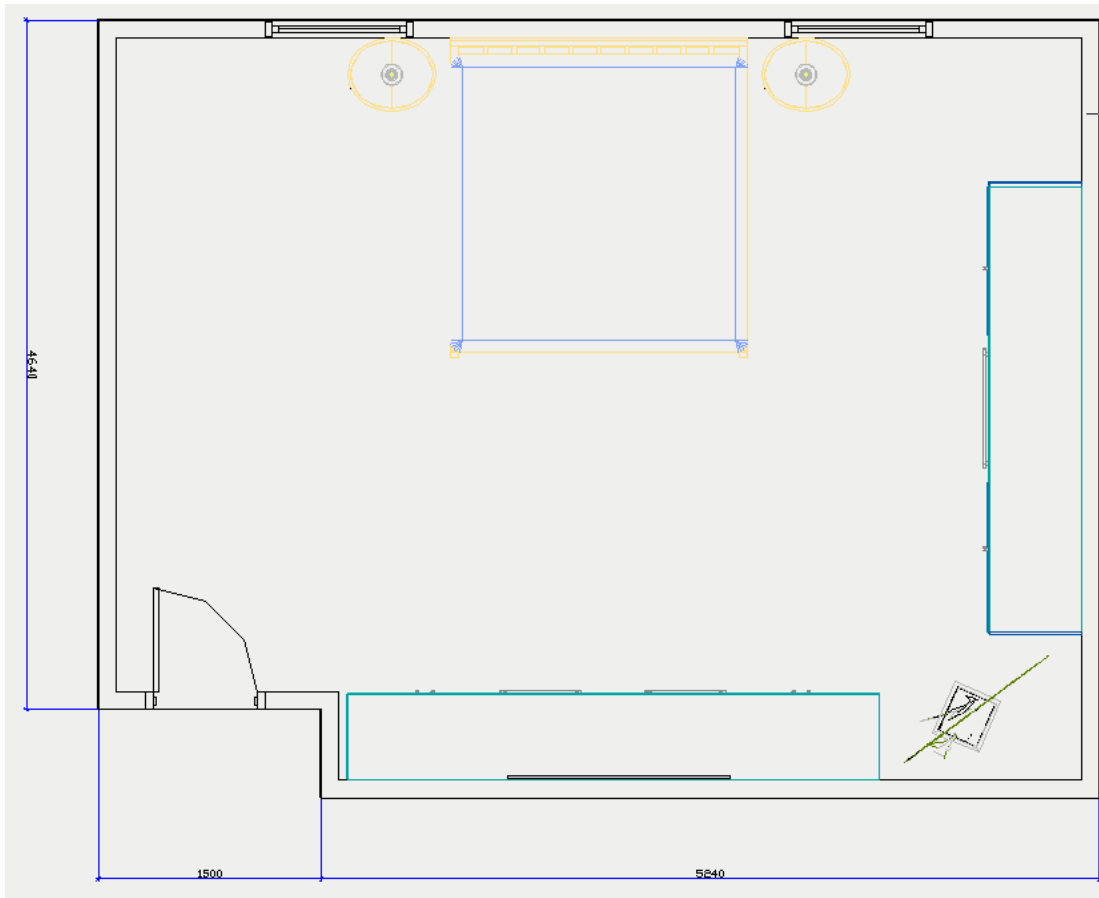
### 2.2 Construction of cabinets according to customer specification in the Designer





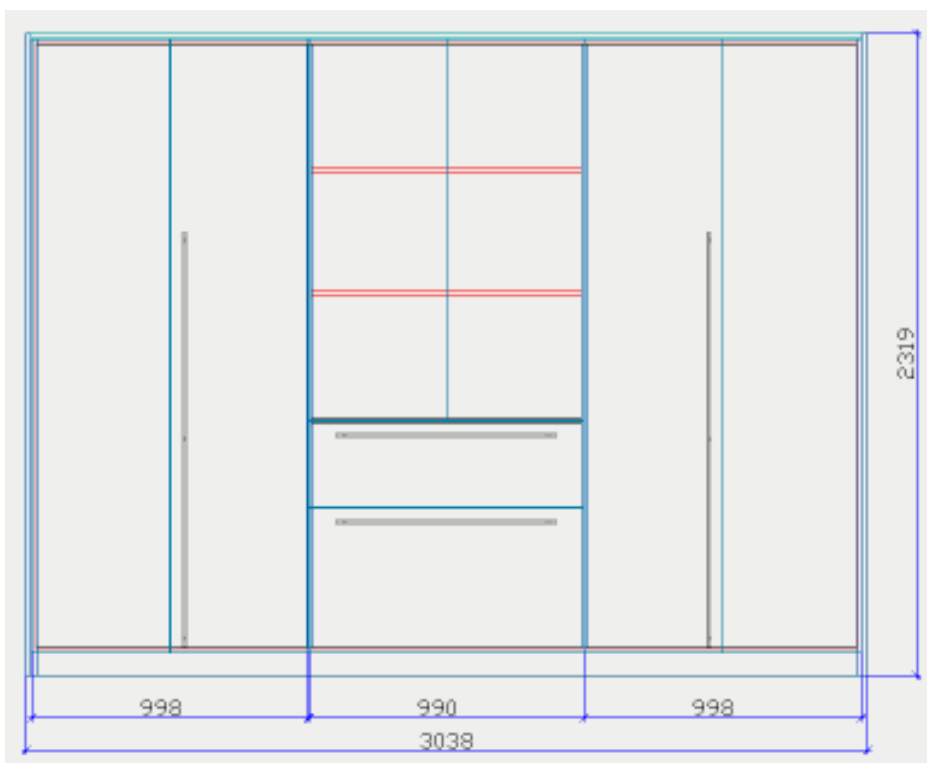
## 2.3 Creation of overview for customer presentation

### 2.3.1 Top view





### 2.3.2 View with measurements



### 2.3.3 Perspective with surface








## 2.4 Creation of production documents

### 2.4.1 Hettich order list

<b>Hettich Bestellliste (kumuliert)</b>			
<b>Auftrag: Demoschlafzimmer</b>		<b>Technik für Möbel</b>	
			
Pos.	Menge	Bestellnummer	Typ
1	6	13225	Alu-Rückwand
2	16	46642	Bodenträger Duplo
3	12	77911	Frontbefestigung mit Spreizzapfen
4	2	9071120	Griff Salvia <->2 x 720 mm
5	2	9071054	Griff Salvia <->320 mm
6	2	9071056	Griff Salvia <->384 mm
7	4	9071111	Griff Salvia <->480 mm
8	4	9071115	Griff Salvia <->736 mm
9	6	13220	InnoTech 470 Frontauszug
10	6	72967	Intermat 9904-T1
11	14	48066	Intermat 9943 TH Fix
12	4	48068	Intermat 9943 TH Fix
13	24	9079695	Anschraub-Kreuzmontageplatte D=0 mm
14	6	45312	Quadro V6 / 470 Silent System EB 9,5
15	2	-	Vorschaubild_Falttürscharnier
16	1	-	Vorschaubild_Fuehrungsstange
17	2	74658	WING Line 170
18	6	70713	Zierkappe B
19	8		ZUKAUF

### 2.4.2 Cutting list (production)

<b>Holz-Stückliste (kumuliert)</b>							
<b>Auftrag: Demoschlafzimmer</b>				<b>Technik für Möbel</b>			
							
Pos.	Menge	Beschreibung	Länge	Breite	Dicke	Fläche	Material
1	1	Arbeitsplatte	3580.00	580.00	38.00	2.076	FPY_38mm
2	1	Arbeitsplatte	3000.00	620.00	19.00	1.860	FPY_38mm
3	1	SchubBlende	520.08	990.67	19.00	0.515	KF_C_002
4	1	SchubBlende	312.05	990.67	19.00	0.309	KF_C_002
5	6	SchubBlende	207.37	599.99	19.00	0.747	KF_C_002
6	1	Oberboden	3462.00	540.00	19.00	1.869	KF_C_028
7	1	Unterboden	3462.00	540.00	19.00	1.869	KF_C_028
8	1	Sockelblende	3462.00	80.00	19.00	0.277	KF_C_028
9	1	Oberboden	2962.00	600.00	19.00	1.777	KF_C_028
10	1	Unterboden	2962.00	600.00	19.00	1.777	KF_C_028



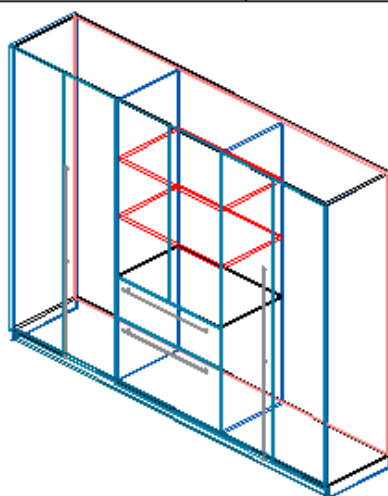
## 2.4.3 Cutting list (assembly)

<b>Holz-Stückliste (Korpus einzeln)</b>							
<b>Auftrag: Demoschlafzimmer</b>				<b>Technik für Möbel</b>			
Pos.	Menge	Beschreibung	Länge	Breite	Dicke	Fläche	Material
<b>Korpusname: Schlafzimmerschrank1</b>							
1	1	SchubkBlende	520.08	990.67	19.00	0.515	KF_C_002
2	1	SchubkBlende	312.05	990.67	19.00	0.309	KF_C_002
3	1	Unterboden	2962.00	600.00	19.00	1.777	KF_C_028
4	1	Oberboden	2962.00	600.00	19.00	1.777	KF_C_028
5	2	Korpusseite	2300.00	600.00	19.00	2.760	KF_C_028
6	2	Mittelseite	2182.00	585.00	19.00	2.553	KF_C_028
7	2	Einlegeboden	974.67	570.00	19.00	1.111	KF_C_028
8	1	KonstrBoden	974.67	585.00	19.00	0.570	KF_C_028
9	4	Tuer	2214.00	497.83	19.00	4.409	KF_D_5-013
10	1	Rueckwand	2192.00	2972.00	8.00	6.515	ES_MAT_BP
11	1	Tuer rechts	1375.88	493.83	5.00	0.679	KF_D_5-013
12	1	Tuer links	1375.88	493.83	5.00	0.679	KF_D_5-013
<b>Korpusname: Schlafzimeranrichte1</b>							
13	6	SchubkBlende	207.37	599.99	19.00	0.747	KF_C_002
14	1	Unterboden	3462.00	540.00	19.00	1.869	KF_C_028
15	1	Oberboden	3462.00	540.00	19.00	1.869	KF_C_028
16	1	KonstrBoden	1556.36	525.00	19.00	0.817	KF_C_028
17	2	Korpusseite	1000.00	540.00	19.00	1.080	KF_C_028
18	2	Mittelseite	882.00	525.00	19.00	0.926	KF_C_028
19	2	Mittelseite	604.10	525.00	19.00	0.634	KF_C_028
20	2	Einlegeboden	350.39	510.00	19.00	0.357	KF_C_028
21	2	Tuer rechts	914.00	477.41	19.00	0.873	KF_D_5-013
22	2	Tuer links	914.00	477.41	19.00	0.873	KF_D_5-013
23	6	SchubkBoden	467.00	513.49	16.00	1.439	KF_C_028
24	1	Rueckwand	892.00	3472.00	8.00	3.097	ES_MAT_BP

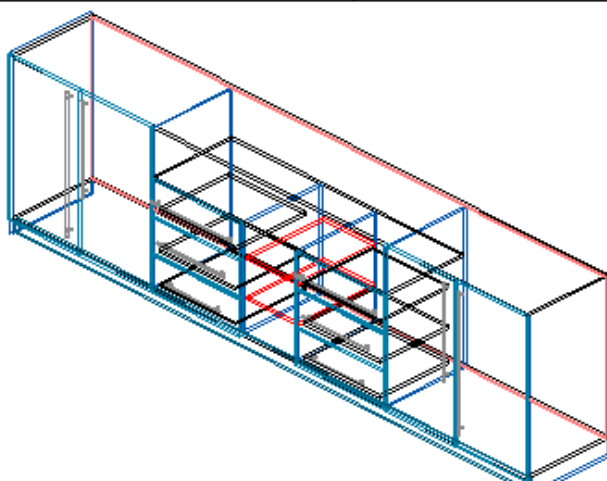


## 2.4.4 Carcase overview

Menge	Korpusname	Auftrag	Artikelmass
1	Schlafzimmerschrank1	Demoschlafzimmer	3000.00 x 2300.00 x 600.00



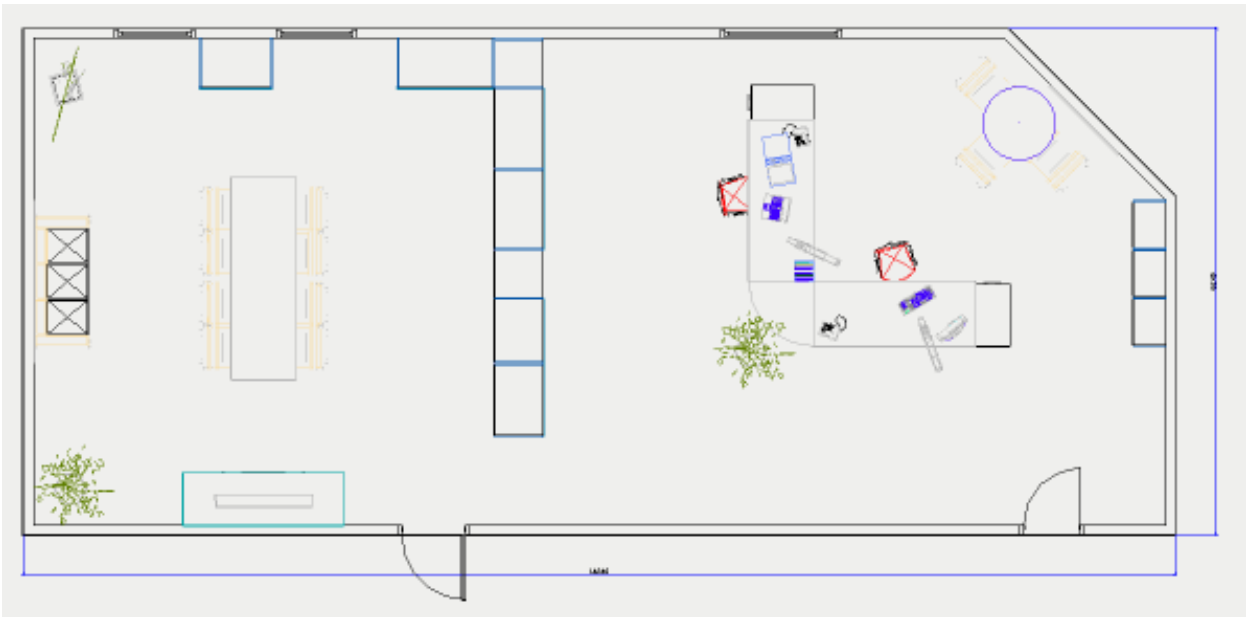
1	Schlafzimmeranrichte1	Demoschlafzimmer	3500.00 x 1000.00 x 540.00
---	-----------------------	------------------	----------------------------



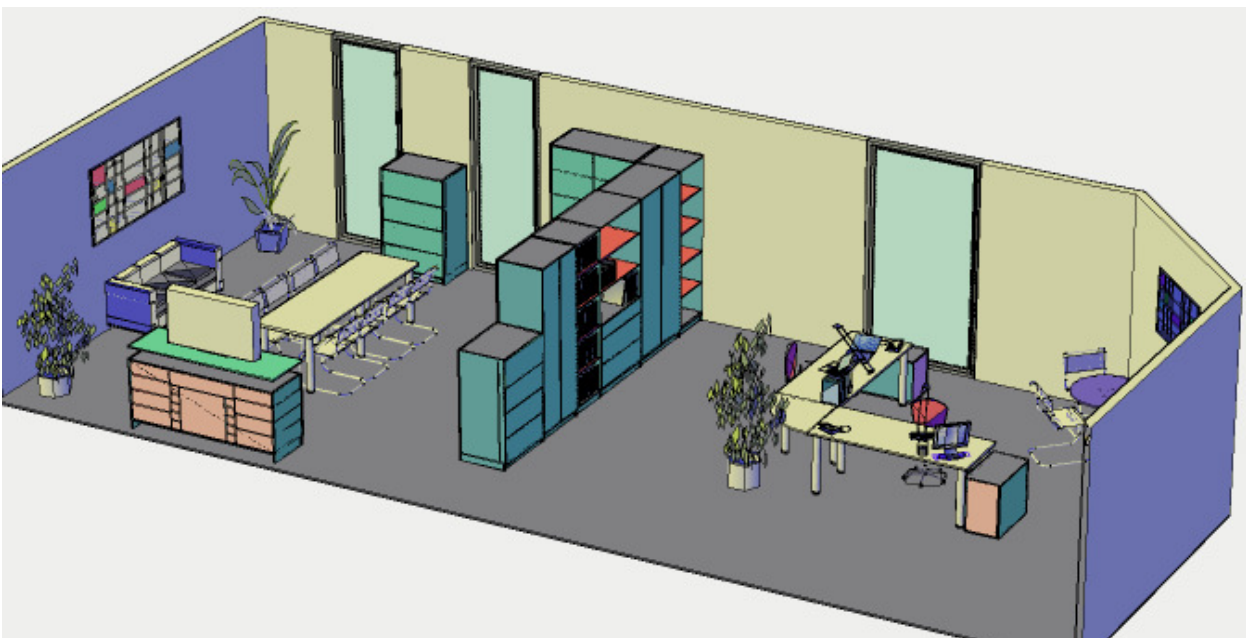


### 3. Office Project

#### 3.1 Floorplan according to customer drawing / measurement



#### 3.2 Construction of cabinets according to customer specification in the Designer, selection of standard cabinets from the library





### 3.3 Creation of overview for customer presentation





## 3.4 Creation of production documents

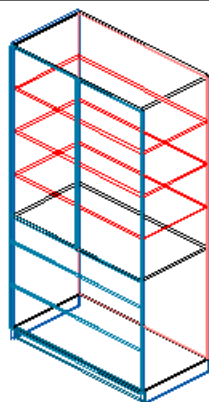
### 3.4.1 Cutting list (production)

<b>Holz-Stückliste (Korpus einzeln)</b>							
<b>Auftrag: Buero_Office_2</b>				<b>Technik für Möbel</b>			
Pos.	Menge	Beschreibung	Länge	Breite	Dicke	Fläche	Material
<b>Korpusname: 600_1162_5HE_5HE_3HE-2T-RL</b>							
1	1	Tuer rechts	1265.00	594.00	19.00	0.751	FPY_D_1-036
2	1	Tuer links	1265.00	594.00	19.00	0.751	FPY_D_1-036
3	2	SchubkBlende	319.75	1192.00	19.00	0.762	FPY_D_1-036
4	1	SchubkBlende	188.00	1192.00	19.00	0.224	FPY_D_1-036
5	2	Korpusseite	2200.00	600.00	19.00	2.640	KF_C_028
6	3	Einlegeboden	1162.00	575.00	19.00	2.004	KF_C_028
7	1	KonstrBoden	1162.00	590.00	19.00	0.686	KF_C_028
8	1	Unterboden	1162.00	600.00	19.00	0.697	KF_C_028
9	1	Oberboden	1162.00	600.00	19.00	0.697	KF_C_028
10	1	Rueckwand	2092.00	1172.00	5.00	2.452	KF_C_028
<b>Korpusname: SW_Endlos_3</b>							
11	1	Tuer rechts	2084.50	396.25	19.00	0.826	FPY_D_1-036
12	1	Tuer rechts	2084.50	491.50	19.00	1.025	FPY_D_1-036
13	1	Tuer links	2084.50	491.50	19.00	1.025	FPY_D_1-036
14	1	Tuer links	2084.50	396.25	19.00	0.826	FPY_D_1-036
15	2	SchubkBlende	319.75	991.00	19.00	0.634	FPY_D_1-036
16	1	SchubkBlende	188.00	991.00	19.00	0.186	FPY_D_1-036
17	4	Mittelseite	2200.00	600.00	19.00	5.280	KF_C_028
18	2	Korpusseite	2200.00	600.00	19.00	2.640	KF_C_028
19	2	Einlegeboden	980.00	575.00	19.00	1.127	KF_C_028
20	1	KonstrBoden	980.00	590.00	19.00	0.578	KF_C_028
21	2	Unterboden	980.00	600.00	19.00	1.176	KF_C_028
22	2	Oberboden	980.00	600.00	19.00	1.176	KF_C_028
23	1	Unterboden	780.00	600.00	19.00	0.468	KF_C_028
24	1	Oberboden	780.00	600.00	19.00	0.468	KF_C_028
25	8	Einlegeboden	580.00	575.00	19.00	2.668	KF_C_028
26	2	Unterboden	580.00	600.00	19.00	0.696	KF_C_028
27	2	Oberboden	580.00	600.00	19.00	0.696	KF_C_028
28	1	Rueckwand	2072.00	790.00	5.00	1.637	FPY_D_1-036
29	2	Rueckwand	2072.00	990.00	5.00	4.103	FPY_D_1-036
30	1	Rueckwand	2072.00	590.00	5.00	1.222	FPY_D_1-036

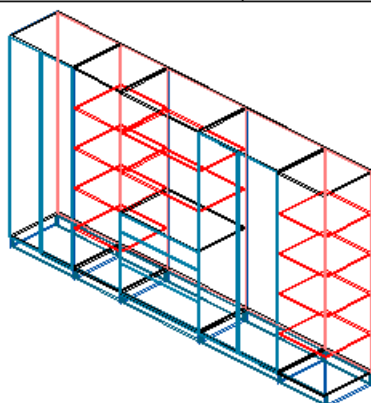


### 3.4.2 Carcase overview

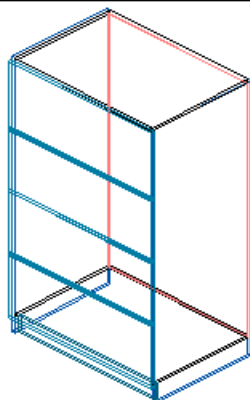
Menge	Korpusname	Auftrag	Artikelmass
1	600_1162_5HE_5HE_3HE-2T-R	Buero_Office_2	1200.00 x 2200.00 x 600.00



1	SW_Endlos_3	Buero_Office_2	4014.00 x 2200.00 x 600.00
---	-------------	----------------	----------------------------



1	600_862_5HE_5HE_5HE_5-5H	Buero_Office_2	900.00 x 1411.00 x 600.00
---	--------------------------	----------------	---------------------------

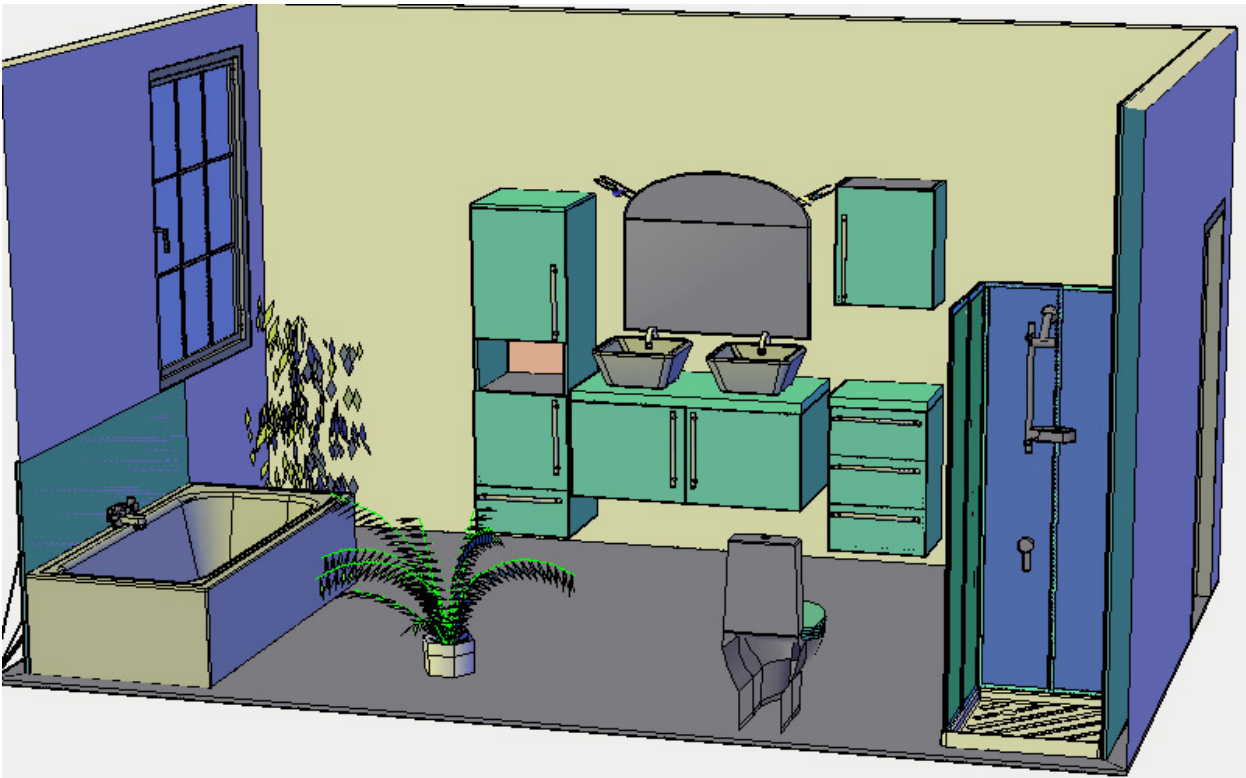


01.09.2009	Seite 2 von 5		
------------	---------------	--	--



## 4. Bathroom Project

### 4.1 Floorplan according to customer drawing / measurement





### 4.2 Creation of overview for customer presentation





## 4.3 Creation of production documents

### 4.3.1 Hettich order list

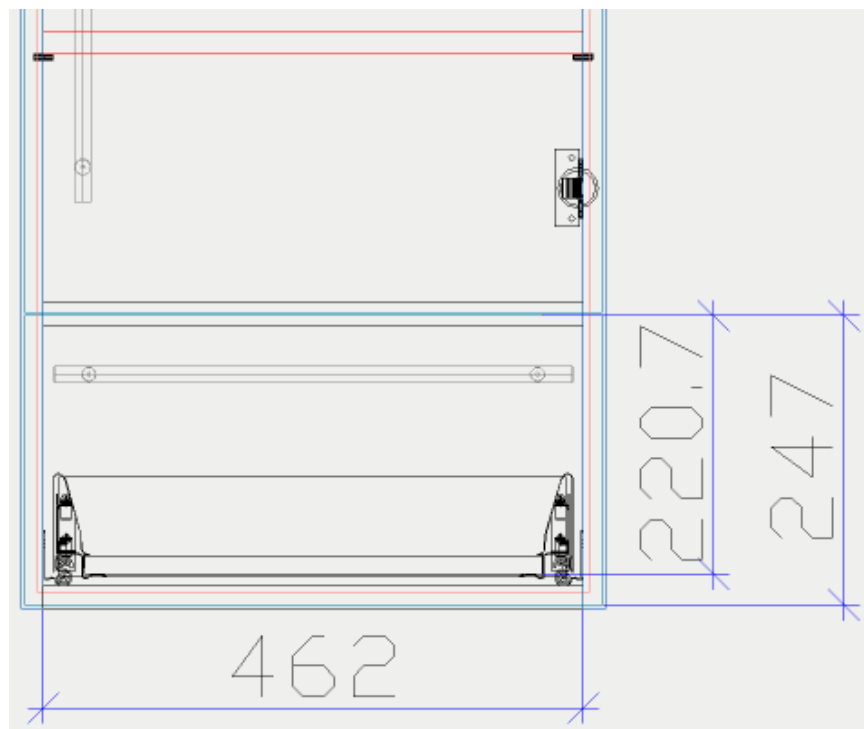
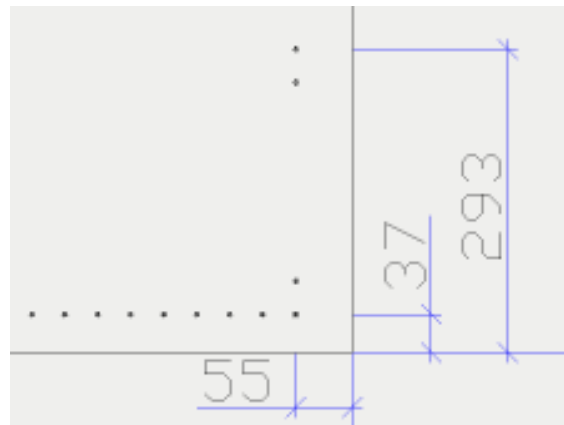
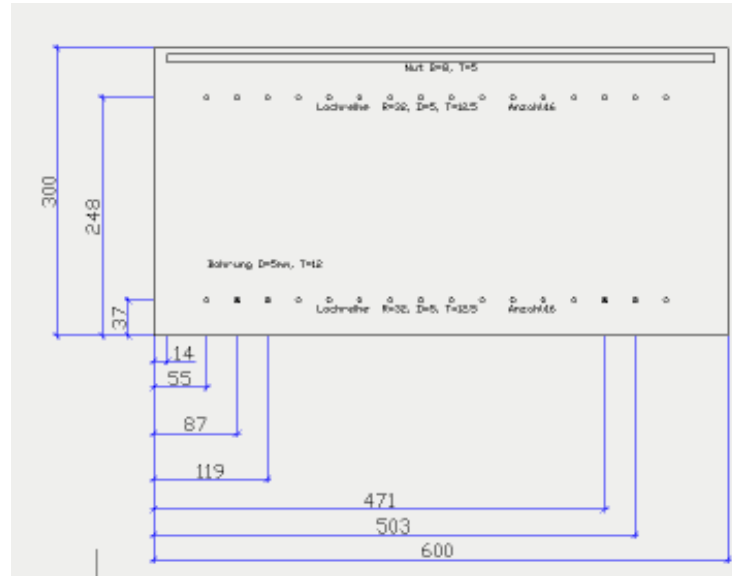
<b>Hettich Bestellliste (Korpus einzeln)</b>			
<b>Auftrag: Demobad</b>		Technik für Möbel	
			
Pos.	Menge	Bestellnummer	Typ
<b>Korpusname: Bad_Unterschrank_Re</b>			
1	4	46642	Bodenträger Duplo
2	1	9071054	Griff Salvia <->320 mm
3	2	48066	Intermat 9943 TH Fix
4	2	9079695	Anschraub-Kreuzmontageplatte D=0 mm
<b>Korpusname: Bad_Unterschrank_Li</b>			
5	4	46642	Bodenträger Duplo
6	1	9071054	Griff Salvia <->320 mm
7	2	48066	Intermat 9943 TH Fix
8	2	9079695	Anschraub-Kreuzmontageplatte D=0 mm
<b>Korpusname: Bad_Hochschrank_Li</b>			
9	12	46642	Bodenträger Duplo
10	2	77911	Frontbefestigung mit Sprezzapfen
11	2	9071054	Griff Salvia <->320 mm

### 4.3.2 Cutting list (assembly)

<b>Holz-Stückliste (Korpus einzeln)</b>							
<b>Auftrag: Demobad</b>				Technik für Möbel			
							
Pos.	Menge	Beschreibung	Länge	Breite	Dicke	Fläche	Material
<b>Korpusname: Bad_Unterschrank_Re</b>							
1	1	Unterboden	562.00	600.00	19.00	0.337	ES_MAT_BS
2	1	Tuer rechts	494.00	594.00	19.00	0.293	ES_MAT_DOOR
3	2	Korpusseite	500.00	600.00	19.00	0.600	ES_MAT_SP
4	1	Oberboden	562.00	600.00	19.00	0.337	ES_MAT_TS
5	1	Einlegeboden	562.00	570.00	19.00	0.320	STANDARD
6	1	Rueckwand	472.00	572.00	8.00	0.270	ES_MAT_BP
<b>Korpusname: Bad_Unterschrank_Li</b>							
7	1	Unterboden	562.00	600.00	19.00	0.337	ES_MAT_BS
8	1	Tuer links	494.00	594.00	19.00	0.293	ES_MAT_DOOR
9	2	Korpusseite	500.00	600.00	19.00	0.600	ES_MAT_SP
10	1	Oberboden	562.00	600.00	19.00	0.337	ES_MAT_TS
11	1	Einlegeboden	562.00	570.00	19.00	0.320	STANDARD
12	1	Rueckwand	472.00	572.00	8.00	0.270	ES_MAT_BP



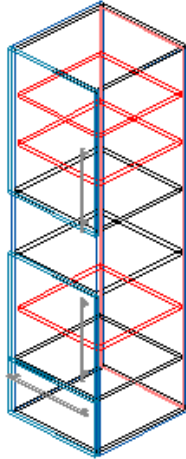
### 4.3.3 Different views of cabinets / drilling pattern



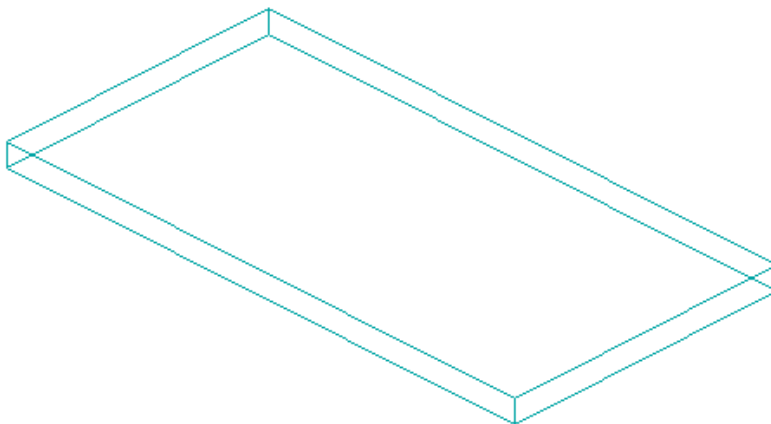


### 4.3.4 Carcase overview

Menge	Korpusname	Auftrag	Artikelmass
1	Bad_Hochschrank_Li	Demobad	500.00 x 1700.00 x 500.00



1	STANDARD	Demobad	1200.00 x 50.00 x 620.00
---	----------	---------	--------------------------



1	Bad_RU	Demobad	500.00 x 750.00 x 400.00
---	--------	---------	--------------------------

