

# hettlock

## Two-point locking mechanism set

### Two-point locking mechanism set

for locking

- single hinged doors
- double hinged doors

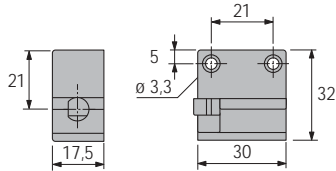
The locking mechanism can be "locked" when the furniture item is open. It is then locked automatically when closed.

For use with the hettlock controller, either plugged in directly or connected via a lead.

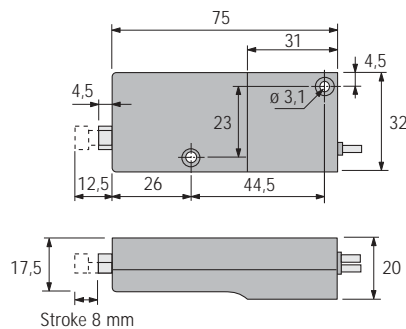
Controller and connecting lead, see page 17.



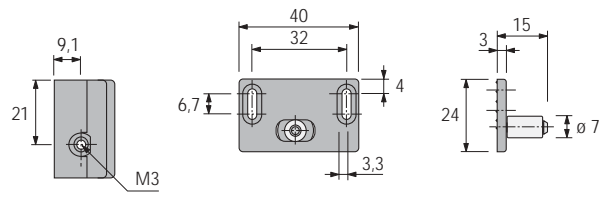
Espagnolette lock



Pin locking mechanism



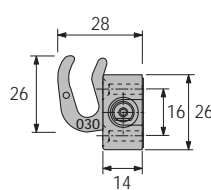
Stop pin with plastic roller



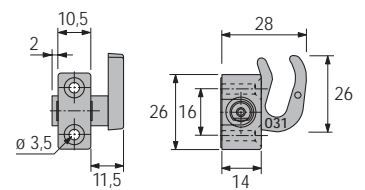
### Set contains:

- 1 pin locking mechanism
- 1 espagnolette lock
- 2 locking hooks, left/right
- 2 stop pins with roller
- Mounting hardware

Locking hook, left



Locking hook, right

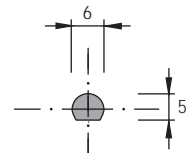
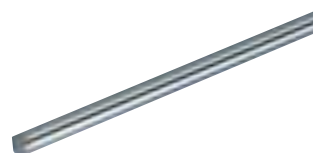


Article	Finish	Order No.	PU
Two-point locking mechanism set	nickel-plated	041 232	1 set

### Espagnolette rod 6/5

Nickel-plated steel

Stock lengths	Order No.	PU
1000 mm	072 251	10
1500 mm	072 253	10



### Specification

#### hettlock two-point locking mechanism

Two-point locking mechanism with steel rod  
for central locking of

- single hinged doors
- double hinged doors

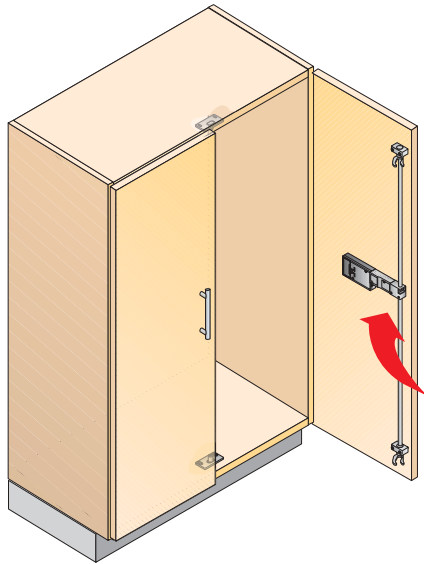
Can be fitted as right or left-hand lock.

Locking without actuation of the turn knob.

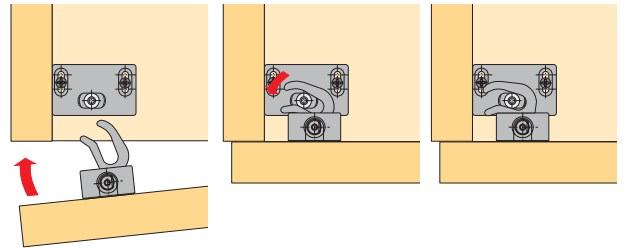
Automatic locking when the furniture unit is closed  
can be programmed optionally.

For use with controllers for the digital hettlock  
furniture locking system.

### Positioning



The door is automatically locked as it closes.



### Installation

