

# hettlock

## Optical feedback unit

### Connecting lead, controller – optical feedback unit

#### Specification hettlock optical feedback unit

Optional optical feedback unit

- LED green = "System unlocked"
- LED red = "System locked"

Mounted on the front or in the side of the furniture item

Diameter = 15,5 mm

For use with controllers for the digital hettlock furniture locking system.

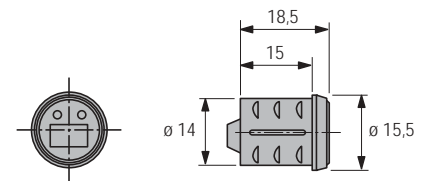
#### Optical feedback unit

as optional additional signal for locking or unlocking:

- Green LED = system unlocked
- Red LED = system locked

The optical feedback unit is visibly mounted on the front or in the furniture unit and connected to the controller by a connecting lead.

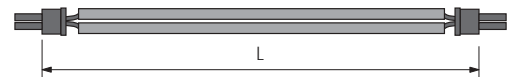
Article	Finish	Order No.	PU
Optical feedback unit	nickel-plated	041 215	1



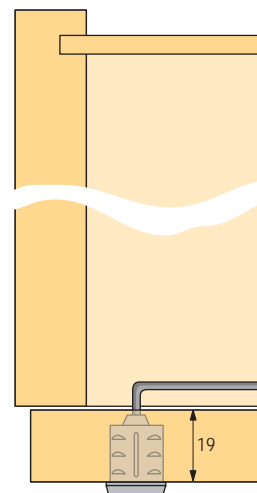
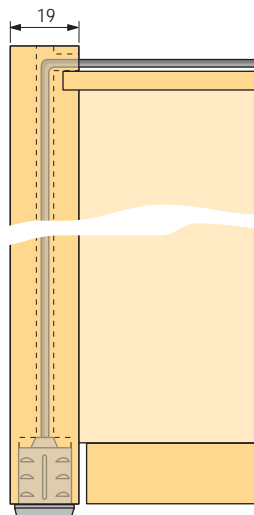
#### Connecting lead, controller – optical feedback unit

For connecting a controller to the optical feedback unit.

Article	Length mm	Order No.	PU
Connecting lead, controller – optical feedback unit	100	041 334	1
	250	041 335	1
	400	041 336	1
	550	041 337	1
	700	041 338	1
	850	041 339	1
1000	041 341	1	



#### Installation



# hettlock

## Trunking

### Connecting set for trunking

#### Trunking

for routing the connecting leads

- Controller – mechanism
- Controller – optical feedback unit

1000 mm, to cut to length as required, self-adhesive, light grey.



Article	Finish	Order No.	PU
Trunking, 1000 mm	light grey	041 591	1

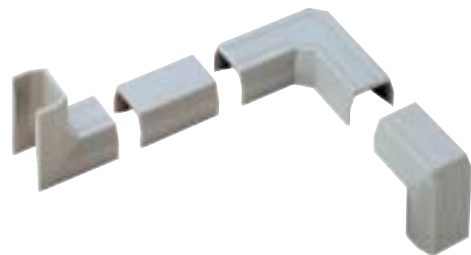
#### Connecting set for trunking

for routing round inside and outside corners, bends and extensions.

Simply clips onto the trunking, light grey.

#### Set contains:

- 2 90° inside corners
- 2 trunking connectors, straight
- 2 90° bends
- 2 90° outside corners



Article	Finish	Order No.	PU
Connecting set for trunking	light grey	041 592	1 set