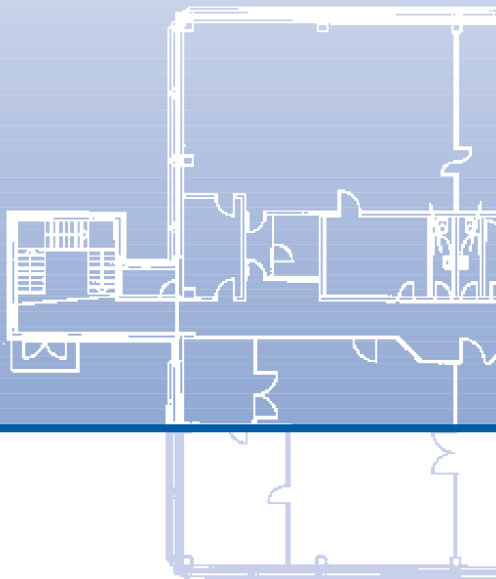


- + Alliance
- + Applications
- + Technology
- + Security
- + Convenience
- + Products

Specification



hettlock system

Digital furniture locking system with active radio transponder as identification medium, similar to the digital locking and organisation system 3060 from SimonsVoss for buildings.

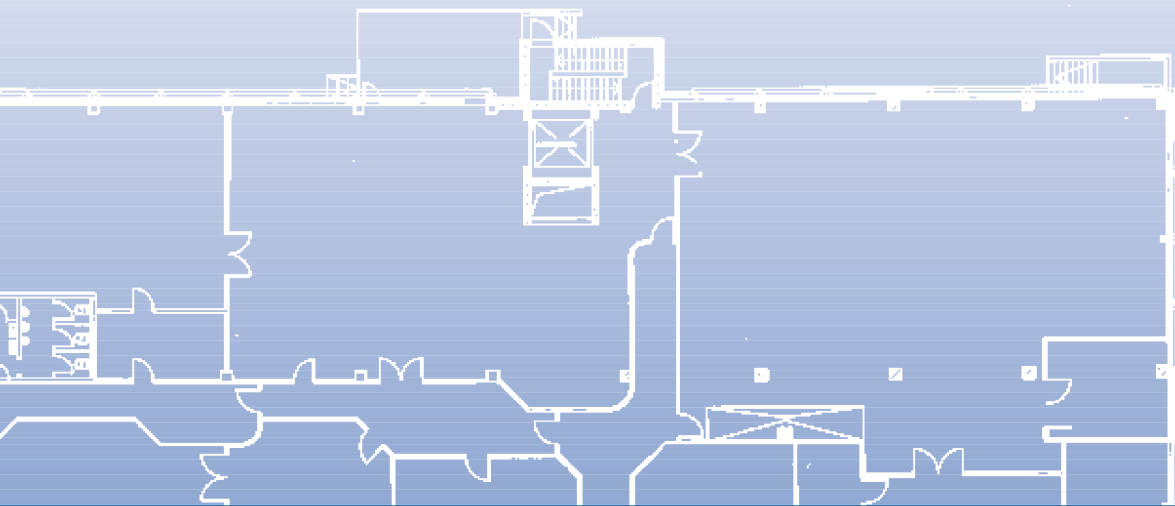
The distance between transponder and identifying controller for actuation of the furniture locking system equals up to 0,4 m.

System interfaces are also available for time management systems, accounting systems, door openers, gate drives, booms, etc.

Individual programming of access authorisation to the building and furniture locking system in a locking plan with up to 16 000 locks and up to 8 000 users / transponders.

The system can be operated both locally and in a network. New transponders can also be authorised in local systems within touring the controllers.





Personal and system-based data are saved exclusively in the software database and protected against unauthorised third-party access by a password. Data cannot be read by external programs.

Wiring is not required for programming and configuration of the controllers. Communication is effected exclusively via radio links.

Transponder identification is based on radio data transmission of encrypted, randomly generated non-reproducible data.

All components meet with the requirements concerning electromagnetic compatibility (EMC).

All transmitting components have a valid FTZ permit.

Radio permits in accordance with CE 0682 have been issued for hettlock for all EU countries (as in October 2001), in Switzerland, Iceland, Norway, Lithuania and Singapore. Status: February 2003.

All system components of the furniture locking system are mounted inside the furniture and protected against external access, thus ensuring that they do not detract from the outward appearance and permit a free choice of handles.

Mobility of the furniture is unrestricted since an external power supply is not required.

One controller drives one or two locking mechanisms with the following internal organisational features:

- Time zone control and programmable ruling for public holidays
- Optional automatic locking at certain time intervals or at a defined time of day
- Log of the last 128 locking operations
- Internal monitoring of the power supply and acoustic warning output before a critical level is reached
- Pulse can be activated for automatic disengagement of the locking mechanism when the power reserve drops below a minimum level

All components of relevance for identification are delivered without programming. Must be individually programmed by the customer.

