



Heavy-duty runner for
wooden drawers. **Quadro V6+**

Technik für Möbel


Hettich

Luxurious convenience for spacious living



Hettich is synonymous with technology for furniture right across the globe. With over 75 years of experience in manufacturing furniture fittings, Hettich continues to set the standards for developing products with outstanding qualities.

As a partner to the furniture manufacturers around the world, Hettich provides first-class customer service and a comprehensive range of products that cater to all manner of applications and demands.



Homes are getting more spacious. Sleek, large-size furniture design is right on trend. This is also being accompanied by growing demands on the functionality and convenience of wooden drawers. Drawers fitted with heavy-duty runners from Hettich deliver lasting top performance and maximum convenience. Quadro can move weights totalling as much as 50 kilograms without the slightest effort for the user.

Silent System gently cushions drawer movement and prevents them from banging closed.

The push to open application conveniently opens any wooden drawer in response to a light press. Push to open makes handleless design an option for all fronts.

Strength and stability in furniture – Quadro

Whether in the kitchen or in the living room and bedroom, Quadro means fundamental strength and stability. Even supporting extremely heavy loads, the full extension runner glides in and out with a movement that's noticeable smooth and silky. The ball-bearing mechanism with as many as 180 steel ball bearings makes hardly a sound, keeps itself clean and leaves no margin of doubt with maintenance-free durability. Installed out of view and available in a choice of lengths, these heavy-duty runners provide almost endless scope for modern design ideas. Quadro moves – powerfully, quietly, for years on end.

Toolless slide-on installation makes the Quadro runner extremely efficient to install. Even the precision height adjustment facility works without tools – simply by turning an adjustment wheel on the catch for instant results. This easy-to-install system is ideal for producing immaculate designs with perfect gap alignment.



Hettich and the environment: committed to responsible practice, active protection, innovative thinking.



Hettich takes a responsibility for the world we live in. This awareness defines the strict policy of environmental management we practise. Our environmental officer has taken personal responsibility for these aspects throughout the company group over a period of many years. In addition, a separate environment committee has been established for each production site. We regard statutory provisions as minimum requirements. At significant sites we also implement the stringent EMAS Directive. And we drive forward developments that in future will help to save even more raw materials and support the necessary endeavours towards sustainability.

Hettich standard for product materials

Hettich underpins its commitment by applying an internal standard for product materials. This ensures that every product – from production to disposal – satisfies all environmental requirements. Products from Hettich come with a long life. Appropriately foresighted, our rigorous standards are formulated to ensure that international legislation is met as well. This provides a reliable basis for marketing furniture world-wide.

Hettich environmental management

Hettich started introducing effective environmental management systems under the stringent EMAS Regulation (currently: EC Regulation No. 761/2001, including EN ISO 14.001/2004) as long ago as 1996. This not only enables us to improve our environmental performance on a broad front but also achieve a high level of safety which, not least, also benefits our customers. This is why we also require our suppliers to meet the necessary minimum standards of environmental protection, industrial safety, health care and social welfare.

The results achieved in the drawer-runner and drawer-system product segment at the Kirchlengern operation illustrate the impressive effects these measures have and verifiably demonstrate our tireless endeavours to translate words into action:

Relief to the environment between 1997 and 2008:

Specific water consumption:	56 per cent
Specific power consumption:	21 per cent
Specific heat consumption:	84 per cent
Specific CO ₂ emissions:	29 per cent

Runner systems for wooden drawers

Quality that meets all of demands

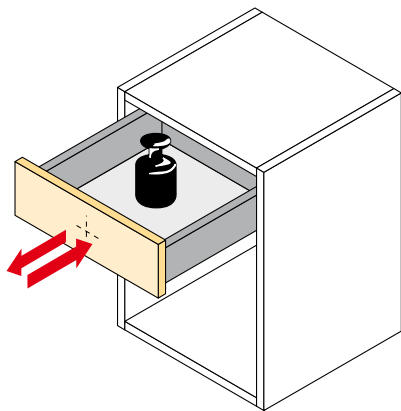
The drawer runners are constantly monitored for quality. The varying quality standards demanded by different markets and segments are each taken into account. The diagrams below show examples of some of the testing processes and what they involve.

Quality criteria

- Wear test over 80,000 opening and closing cycles
- Retention-on-opening test at up to 1.3 m/s
- Horizontal strain test with up to 15 kg
- Vertical strain test with up to 30 kg
- Max. opening and closing forces ≤ 50 N
- After testing, the drawer must still be in proper working order

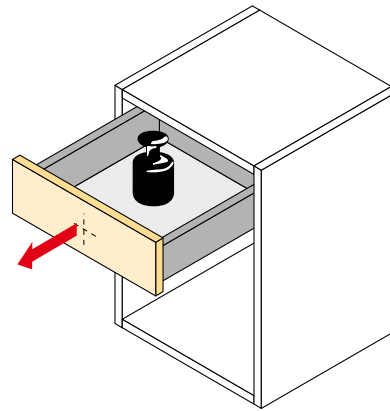
Wear test

The fully laden drawer must remain in proper working order after opening and closing it for a defined number of times at a defined test velocity.



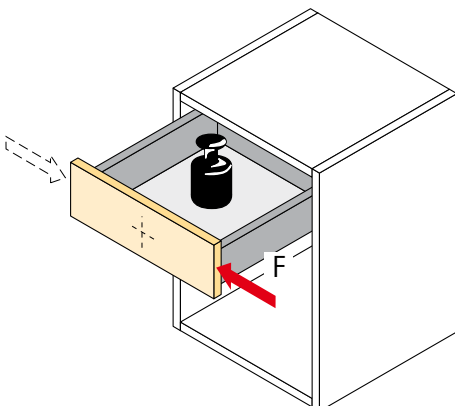
Retention-on-opening test

The drawer is abruptly opened all the way several times at a defined test velocity.



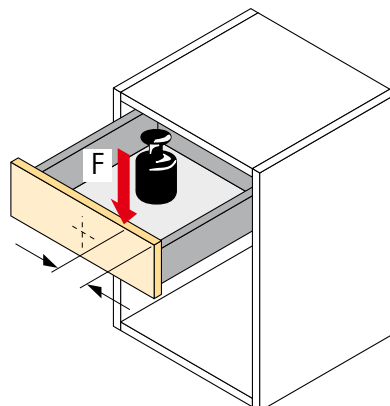
Horizontal strain test

Opened all the way, the drawer is exposed to horizontal strain from a defined lateral force.



Vertical strain test

Opened all the way, the drawer is exposed to vertical strain from a defined eccentric force.



Test to DIN EN 15 338

Runner system for wooden drawers

Full extension runner

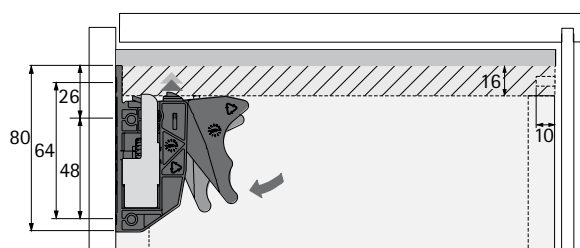
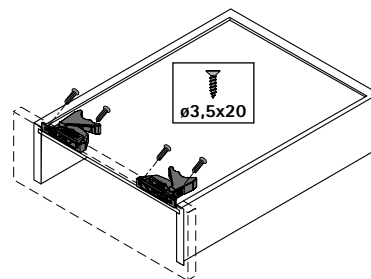
Quadro V6+ SFD



- Load capacity: up to a total weight of 50 kg (drawer including contents) depending on length
- Silent System: the soft-close feature integrated in the Quadro V6+ closes the drawer quietly and gently
- Perfect vertical and lateral stability: The robust, resilient tracks provide the steel balls with optimum control to give precision-guided runner action
- Requiring no maintenance, the ball tracks clean themselves automatically
- Slide-on installation: Simply position the drawer with catch on the runner and push into place. Done!
- Sturdy catch with integrated, toolless height adjustment for a perfect fit
- For wooden drawers with slotted frame

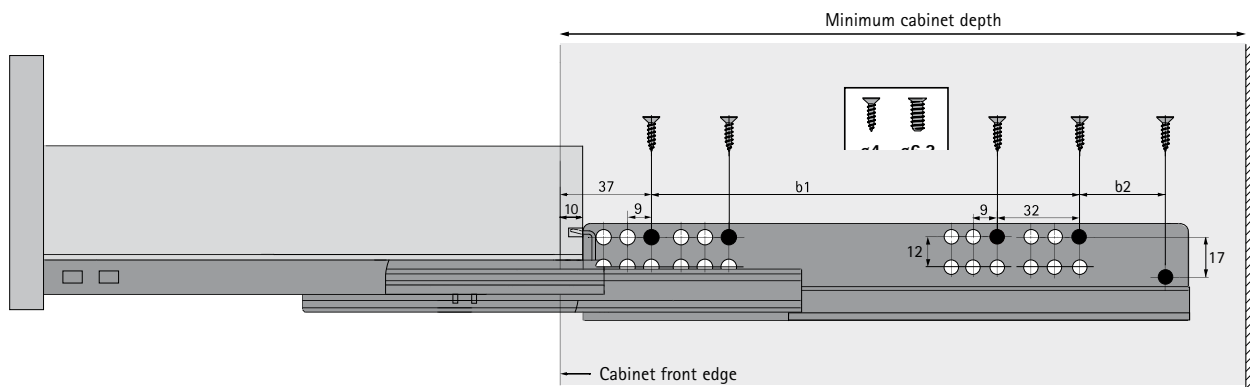
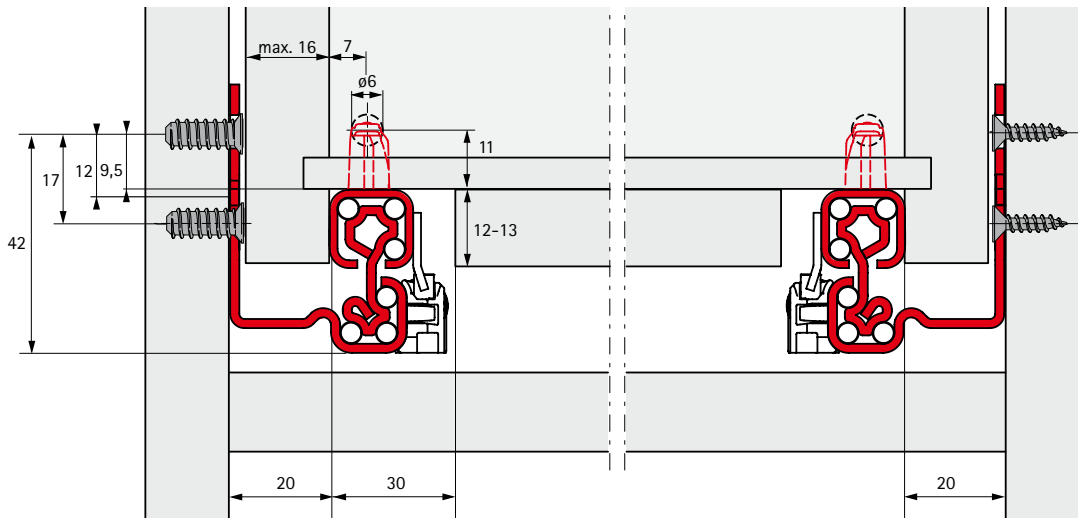
Nominal length/ Drawer length mm	Load capacity kg	Hole spacing distance b1 mm	Hole spacing distance b2 mm	Minimum cabinet depth mm	Order no. left	Order no. right
350	40	192	21	363	9 119 167	9 119 168
380	40	224	19	393	9 119 191	9 119 192
400	45	224	32	413	9 115 506	9 115 507
420	50	224	32	433	9 119 193	9 119 194
450	50	256	32	463	9 119 148	9 119 149
480	50	256	32	493	9 119 195	9 119 196
500	50	288	64	513	9 115 580	9 115 581
520	50	288	64	533	9 119 197	9 119 198
550	50	288	64	563	9 119 162	9 119 164
580	50	352	64	593	9 119 199	9 119 200
600	50	352	64	613	9 115 538	9 115 539

Catch with integrated
height-adjustment facility and slotted frame
Black plastic



Article	Order no.
Catch, Quadro V6+ EB20, left	9 117 483
Catch, Quadro V6+ EB20, right	9 117 485
Set, left / right	9 117 492

Slide-on installation
 Silent System
 Loading capacity 40 - 50 kg



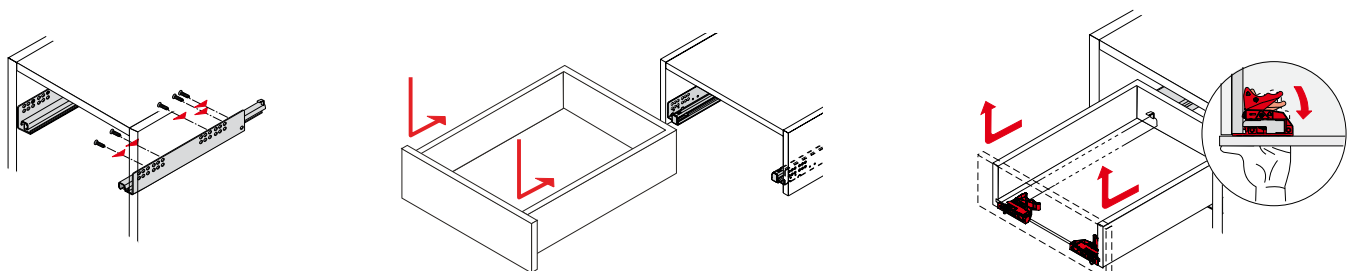
Stated dimensions are based on a 1.5 mm gap between front panels. Cabinet hole pattern must allow for thicker drawer front buffers.

Information on installing

Quadro installation

The Quadro is attached to the cabinet using 4 mm dia. wood screws or screws for direct fixing in 6.3 mm dia. holes

Removal



Number of fixing screws depends on total weight, type of screw and quality of cabinet material.

Runner system for wooden drawers

Full extension runner

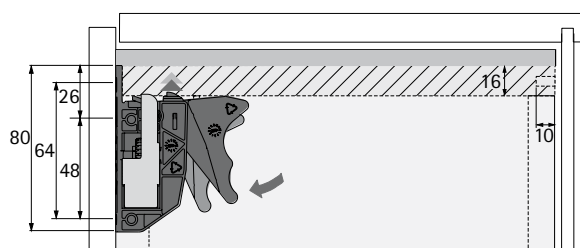
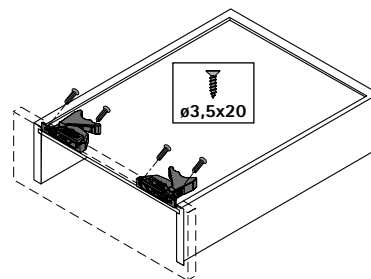
Quadro V6+ SFP



- Load capacity: up to a total weight of 50 kg (drawer including contents) depending on length
- Push to open – the precision push-to-open mechanism automatically opens the drawer in virtual silence
- Perfect vertical and lateral stability: The robust, resilient tracks provide the steel balls with optimum control to give precision-guided runner action
- Requiring no maintenance, the ball tracks clean themselves automatically
- Slide-on installation: Simply position the drawer with catch on the runner and push into place. Done!
- Sturdy catch with integrated, toolless height adjustment for a perfect fit
- For wooden drawers with slotted frame

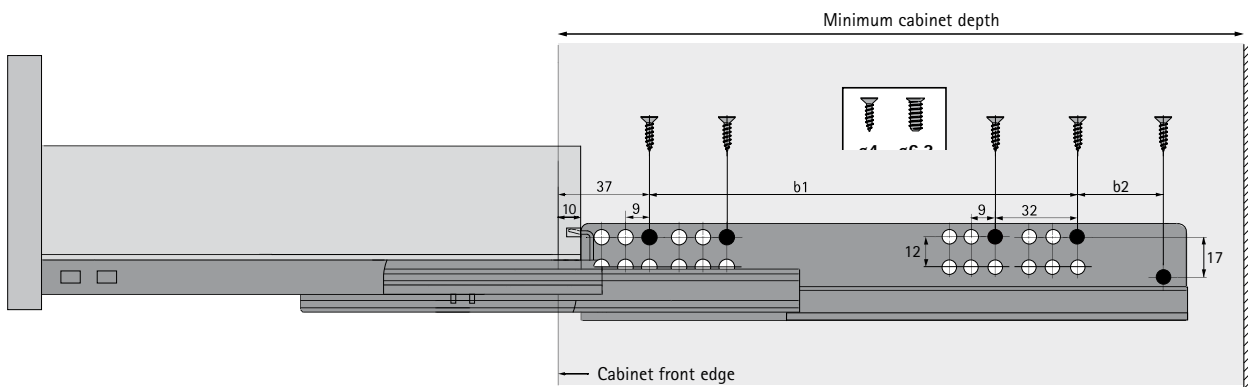
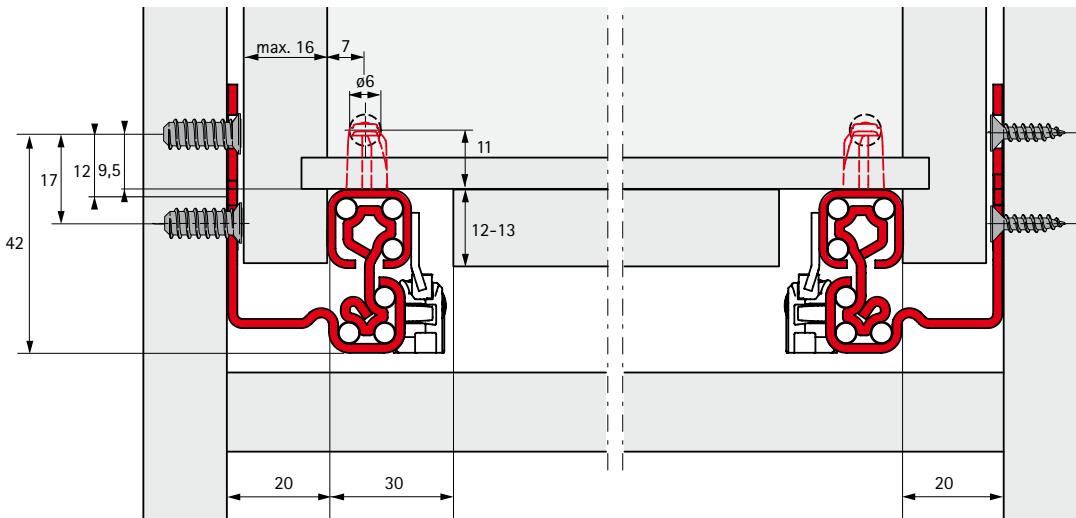
Nominal length/ Drawer length mm	Load capacity kg	Hole spacing distance b1 mm	Hole spacing distance b2 mm	Minimum cabinet depth mm	Order no. left	Order no. right
350	40	192	21	363	9 129 692	9 129 693
380	40	224	19	393	9 129 700	9 129 701
400	45	224	32	413	9 129 728	9 129 729
420	50	224	32	433	9 129 736	9 129 737
450	50	256	32	463	9 129 749	9 129 750
480	50	256	32	493	9 129 757	9 129 758
500	50	288	64	513	9 129 779	9 129 780
520	50	288	64	533	9 129 789	9 129 790
550	50	288	64	563	9 129 375	9 129 376
580	50	352	64	593	9 129 800	9 129 801
600	50	352	64	613	9 129 821	9 129 822

Catch with integrated height-adjustment facility and slotted frame
Black plastic



Article	Order no.
Catch, Quadro V6+ EB20, left	9 117 483
Catch, Quadro V6+ EB20, right	9 117 485
Set, left / right	9 117 492

Slide-on installation
 Push to open
 Loading capacity 40 - 50 kg



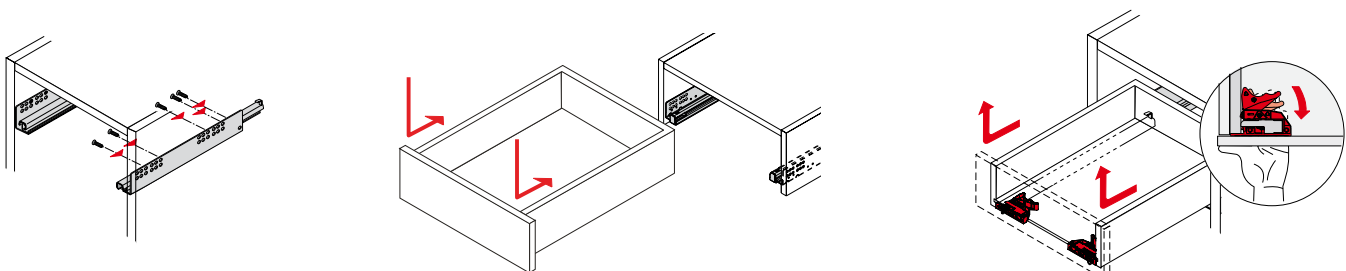
Stated dimensions are based on a 4.0 mm gap between front panels. Cabinet hole pattern must allow for thicker drawer front buffers.

Information on installing

Quadro installation

The Quadro is attached to the cabinet using 4 mm dia. wood screws or screws for direct fixing in 6.3 mm dia. holes

Removal



Number of fixing screws depends on total weight, type of screw and quality of cabinet material.



Technical Information

Legal Notice



Application

Hettich runner systems are suitable for use in living-room, kitchen and office furniture both in the home and business environment.

Load capacity and over-extension guard

The load capacity (to DIN EN 15338) stated in the catalogue is understood to mean the weight of the drawer itself including contents in kg.

All Hettich runner systems feature guards to prevent the drawer from rolling out and being removed unintentionally and meet the requirements of the impact test in a test frame to DIN EN 15338.

Fitted in the proper manner, the runner systems featured in this catalogue are suitable for furniture defined in DIN 14749.

The maximum front-panel height is governed in particular by material, drawer size and drawer runner. We will be pleased to provide any further information you may require.

Corrosion test

Hettich runner systems satisfy the requirements on corrosion defined in DIN EN 15338, 72-hour condensation-water test to DIN EN 6270.

General technical conditions

The fitting instructions, screw-fixing points and loading information specified in this catalogue assume proper attachment using Hettich direct fixing screws or Hettich flat-head chipboard screws of the stated size in a cabinet material providing a screw pull-out resistance of $> 1,000$ N in accordance with DIN EN 320. Hettich accepts no responsibility for the use of materials or methods of attachment other than those stated. If other materials or methods of attachment are used, the furniture manufacturer is required to verify the system's load-bearing capacity.

General Terms of Sale and Delivery:

All products and services will be provided exclusively on the basis of our General Terms of Sale and Delivery published on our website at www.hettich-agb.com.

Legal information

© Hettich Marketing- und Vertriebs GmbH & Co. KG
32278 Kirchlegern · Germany
September 2011

We reserve all rights to this catalogue under copyright law. It shall not be permissible to duplicate this catalogue in any form either in whole or in part without our written consent. Subject to technical alterations. Errors and omissions excepted. Subject to colour variations.

Hettich Marketing-
und Vertriebs GmbH & Co. KG
Vahrenkampstrasse 12-16
32278 Kirchlengern
Germany

Phone +49 5223 77-0
Fax +49 5223 77-1948
info@de.hettich.com
www.hettich.com

1009-026-QuadroV6+-1011-HMV/ENG

Technik für Möbel


Hettich