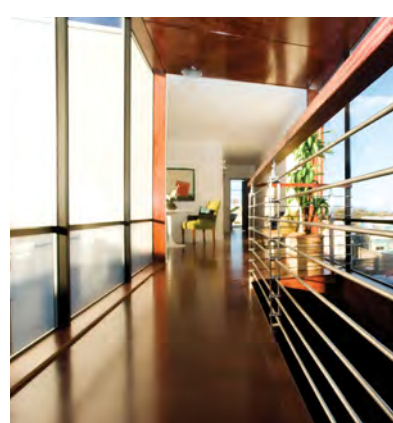
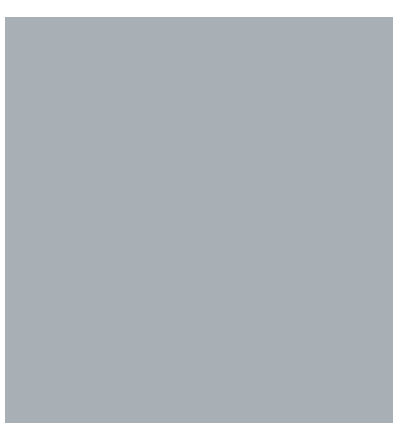
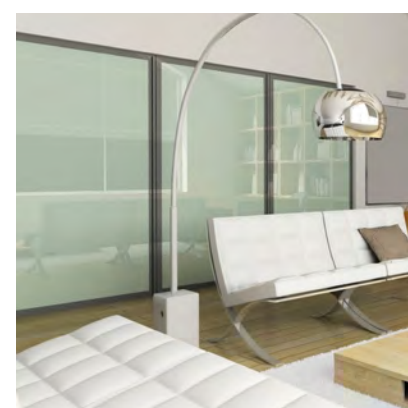
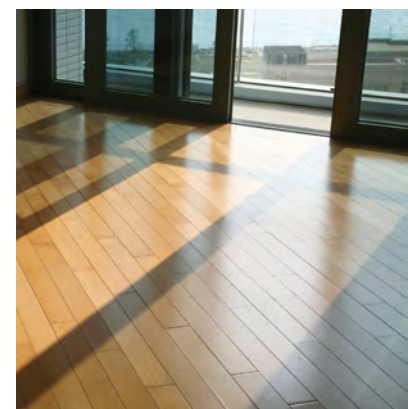
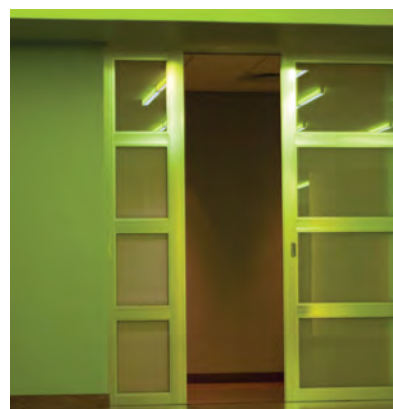
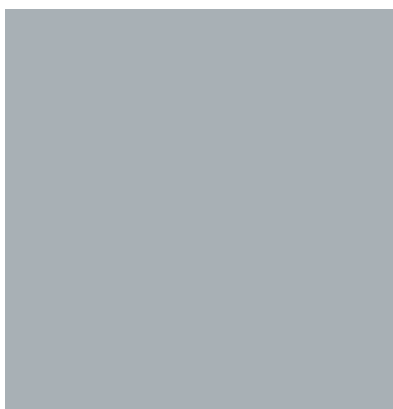
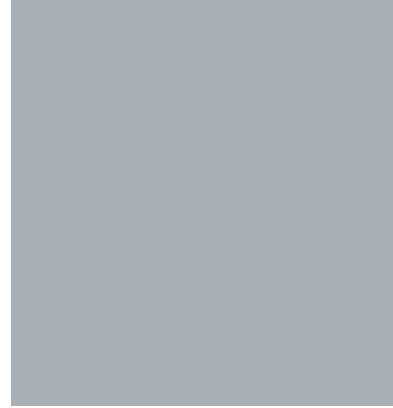
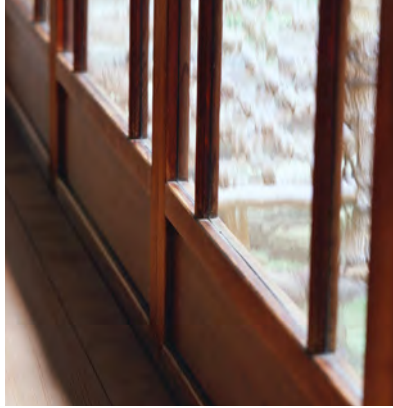
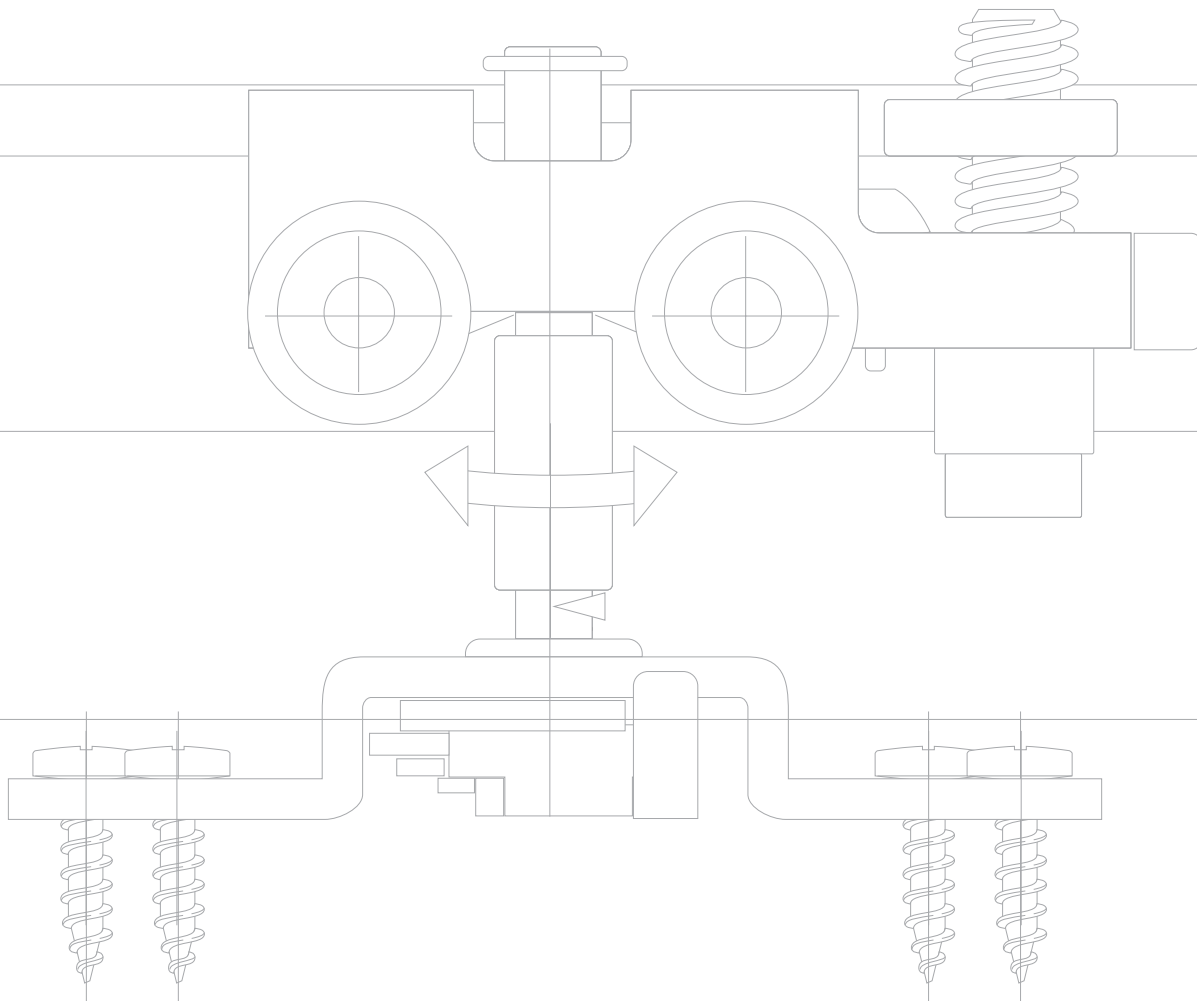


Adaptable design. Genuine durability.
Top Line Grant® 150, 325, and 500 Series Sliding Door Hardware

Technik für Möbel

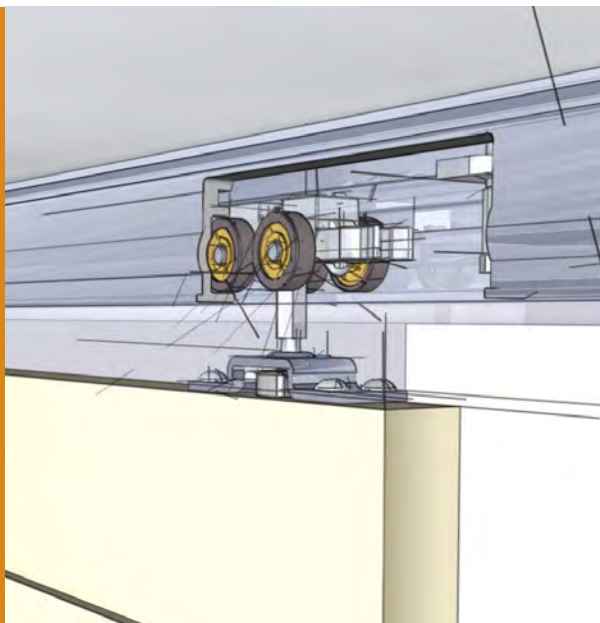
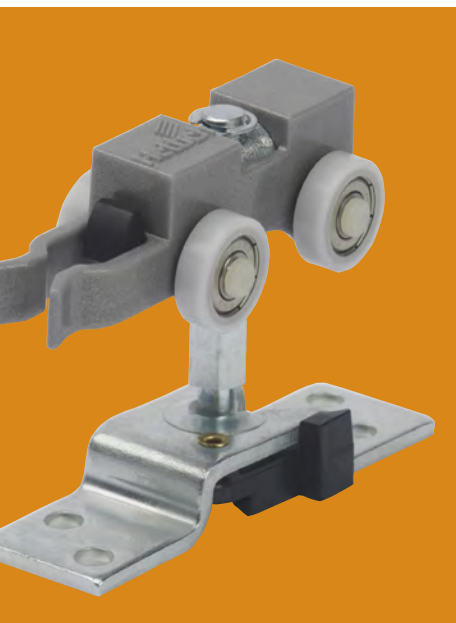

Hettich





Top Line Grant[®] 150, 325, and 500 Box Track Systems for Sliding Doors

Designed to meet the needs of both residential and commercial applications, the Top Line Grant 150, 325, and 500 Series provide real solutions for installations that require the movement of heavy panels, space dividers and large doors. All of these Top Line Grant systems conform to ANSI/BHMA Grade 1 standards for outstanding performance.



Designed for style. Designed for function.

Get the look you want with the quality that you expect. Doors can be mounted from the ceiling or the wall. Installation is easy. The new Grant Box Track systems will hide the hardware and keep the focus on your design.

Features:

- Heavy duty aluminum box track conceals hardware
- Precision ball bearing wheels for smooth, quiet and long lasting operation
- Top mount installation, easy to install no drilling required
- Quick release top plate for easy installation and removal of door
- Self-leveling design for maximum performance and durability
- Adjustable end stop assembly to hold door in position
- Wall mount option (150 and 325 series)
- Fascia options (150 and 325 series)
- Ideal for all single, bi-parting, and by-passing applications



Top Line Grant 150 Series

- designed for doors up to 150 lbs (68 kg)
- 1" minimum door thickness
- headroom: 2 1/8" minimum, 3/8" vertical adjustment
- anodized or mill finish track options available up to 16 feet (4800 mm)
- wall mount option
- fascia options available

Top Line Grant 325 Series

- designed for doors up to 325 lbs (147kg)
- 1" minimum door thickness
- headroom: 2 25/32" minimum, 3/8" vertical adjustment
- anodized or mill finish track options available up to 16 feet (4800 mm)
- wall mount option
- fascia options available

Top Line Grant 500 Series

- designed for doors up to 500 lbs (227 kg)
- 1 3/8" minimum door thickness
- headroom: 3 1/32" minimum, 7/16" vertical adjustment
- anodized track in lengths up to 16 feet (4800 mm), longer options upon request



Made in USA

Hettich America L.P.
4295 Hamilton Mill Road
Buford, GA 30518
Phone: (800) HETTICH (438-8424)
Fax: (800) 627-5152

Email: info@hettichamerica.com
www.hettichamerica.com
www.grantdoorhardware.com

GRANT-TRIFOLD-113439600-0710

Technik für Möbel

